

# INSTALLATION

## TOOLS NEEDED



Mitre saw blade  
(254 mm–305 mm,  
40 teeth or more)



Trex groove  
router bit



Trex groove cutter



Standard power drill



Carbide-tipped  
blades

## SAFETY



Long sleeves



Safety glasses



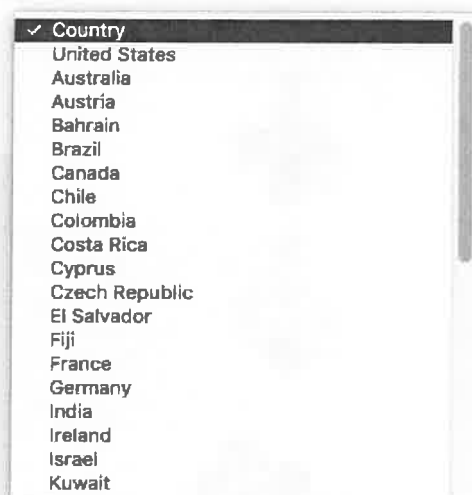
Gloves



Dust mask

- Please be sure to follow the temperature suggestions at installation to allow for the expansion and contraction of Trex WPC boards.
- For approved Australian spans, refer to <https://au.trex.com/trex-owners/downloads/> and view detailed span tables provided by SOTO Engineering located under Evaluation Service Reports.

For Care and Cleaning and Physical and Mechanical Properties, visit [www.trex.com](http://www.trex.com) and scroll to the bottom to select your country



COUNTRY

### MORE

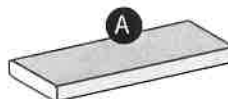
Contact Us  
Connect  
Live chat: offline  
Site Map  
Privacy Policy  
Terms Of Use  
FAQs

# INSTALLATION

## TREX™ DECKING, FASCIA, AND FASTENING SYSTEMS

### 25mm Square-Edge Board

Actual Dimensions:  
140mm x 25mm x 5.48m  
4.8m and 6.1m lengths – special order



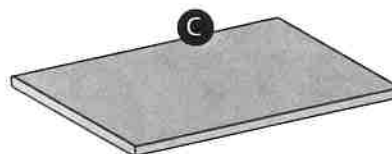
### 25mm Grooved-Edge Board

Actual Dimensions:  
140mm x 25mm x 5.48m  
4.8m and 6.1m lengths – special order



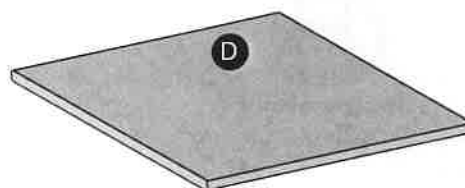
### 14 x 184mm Fascia

Actual Dimensions:  
184mm x 14mm x 3.65m



### 14 x 288mm Fascia (special order only)

Actual Dimensions:  
288mm x 14mm x 3.65m



### 33mm Square-Edge Board

Actual Dimensions:  
140mm x 33mm x 4.88m



### Trex™ Hideaway® Starter Clip

Black-Coated Stainless Steel (steel grade 316SS)



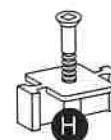
### Trex™ Hideaway® Hidden Connector Clip (for use with Aluminium and Steel Substructure)

Glass-filled Nylon (steel grade 410SS)



### Trex™ Hideaway® Hidden Connector Clip (for use with Timber Substructure)

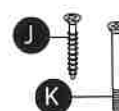
Glass-filled Nylon (steel grade 316SS)



### Router Bit



### Fascia and Deck Screws



# INSTALLATION

## SPANNING REQUIREMENTS

For approved Australian spans, refer to <https://au.trex.com/trex-owners/downloads> and view detailed span tables provided by SOTO Engineering located under Evaluation Service Reports.

## RECOMMENDED FASTENERS

COMPATIBLE FASTENER MATERIALS FOR USE WITH TREX			
Substrate Material	Carbon Steel w/ 1000 hr. Corrosion- Resistant Coating	Stainless Steel: 410 Series or 1.4003/ 1.4006	Stainless Steel: 300 Series or 1.4301/1.4401/1.4567
Exterior Grade Natural or Treated Wood	Yes***	Yes	Yes**
Plastic or Fiberglass Composites	Yes	Yes	Yes
Aluminium	No	No	Yes
Steel	No	Yes*	Yes*

\*Trex Elevations Universal Hidden Fastener are approved

\*\*Trex Universal Hidden Fasteners are approved

\*Trex Universal Hidden Fasteners for Aluminum Framing are approved

\*\*\*See Trex recommended fasteners for listing of approved decking screws

This guide is for recommended use of fasteners for use with Trex decking. Not all sub-structure materials fall under these categories. In the case of any unique substrate composition of materials, or proprietary composites, consult the substrate manufacturer for recommendations of applicable fasteners.

		Transcend®
RECOMMENDED FASTENERS	DECKING-HIDDEN FASTENERS	
	Trex Hideaway® Universal Hidden Fastener/Trex Elevations Universal Hidden Fastener	X
	FastenMaster® TrapEase 3 Ultimate Composite Deck Screw	X
	Cortex® Concealed Fasteners	X
	Starborn® Pro Plug® System for PVC & Composite (Epoxy Coated & Stainless (2" are approved for sleeper & roof top applications only)	X
	KlevoKlip™ Snap-LOC Clip	X
RECOMMENDED FASTENERS	FASCIA*	
	Starborn® Deckfast® Fascia System - Epoxy Coated* and Headcote® Stainless	X
	SplitStop™ Fascia Screws (uses SplitStop™ Fascia Bit)	X
	Cortex® Hidden Fastening System for Fascia	X

Refer to [au.trex.com](https://au.trex.com), under the Literature/Technical Information for additional recommended fasteners.

Fascia system screws listed above **can only be used with composite fascia profiles**, and cannot be used with standard thickness decking boards used as fascia. Use stainless steel screws near water applications.

If any condition occurs which is attributable to the use of non-recommended fasteners, such condition shall not be covered under Trex's Limited Warranty.

FastenMaster®, TrapEase® 3, and Cortex® are registered trademarks of OMG, Inc.

DeckFast® Fascia System screws are registered trademarks of Starborn Industries Inc.

SplitStop™ fascia screws are a registered trademark of Titan Metal Werks, Inc.

Trex recommends the use of two screws per joist.

All recommended screws are designed to be installed flush with decking surface, **DO NOT** countersink screws.

Use recommended stainless steel screws in any areas near bodies of saltwater.

### BUSHFIRE SAFETY REGULATIONS

Trex Transcend decking is compliant with bushfire safety regulations for BAL-19 and BAL-29 zones. Refer to <https://au.trex.com/trex-owners/downloads> and view Trex technical bulletin titled BAL Testing Results under Technical Information, for certain requirements in order to meet these regulations. Please also consult your local council or State building codes for your particular geographical requirements.

## PRESSURE-TREATED FRAMING REQUIREMENTS AND GAPPING

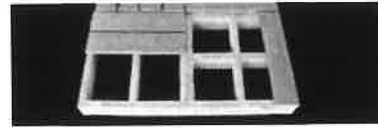


- » This system should not float; it must be attached securely to framing system.
- » With wood framing, all cut ends should be coated to preserve ends. Refer to local building supplier for what can be used.
- » When using screws to attach decking to framing, use two screws per every joist.

### Herringbone Pattern



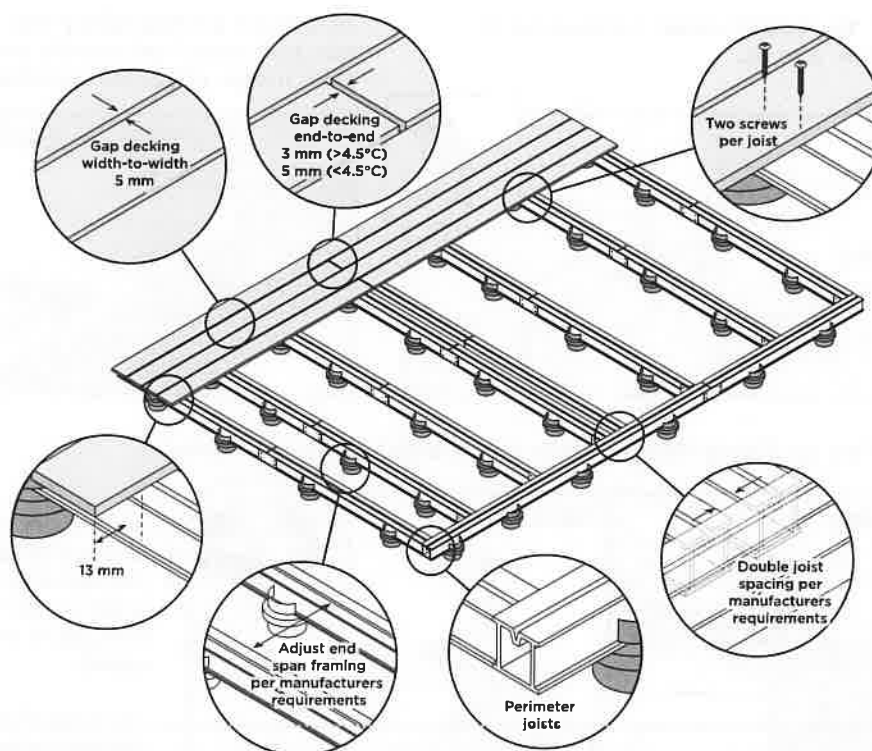
### Picture Frame Pattern



### Tile Pattern

# INSTALLATION

## METAL FRAMING REQUIREMENTS AND GAPPING



### COMPATIBLE FASTENER MATERIALS FOR USE WITH TREX

Substrate Material	Carbon Steel w/ 1000 hr. Corrosion Resistant Coating	Stainless Steel: 410 Series or 1.4003/1.4006	Stainless Steel: 300 Series or 1.4301/1.4401/1.4567
Exterior Grade Natural or Treated Wood	Yes***	Yes	Yes**
Plastic or Fiberglass Composites	Yes	Yes	Yes
Aluminium	No	No	Yes
Steel	No	Yes*	Yes*

\*Trex Elevations Universal Hidden Fastener are approved

\*\*Trex Universal Hidden Fasteners are approved

\*Trex Universal Hidden Fasteners for Aluminum Framing are approved

\*\*\*See Trex recommended fasteners for listing of approved decking screws

This guide is for recommended use of fasteners for use with Trex decking. Not all sub-structure materials fall under these categories. In the case of any unique substrate composition of materials, or proprietary composites, consult the substrate manufacturer for recommendations of applicable fasteners.

#### NOTES:

- » Gapping rules are required when installing Trex decking.
- » When using an aluminum framing system or other type of metal for sleeper systems, follow manufacturer's instructions for proper installation.
- » Depending on loading requirements and/or if installing Trex decking on an angle, framing spacing may need to be adjusted.
- » Depending on type of structure being used, different types of fasteners must be used for attachment. Refer to the chart at right for compatible fasteners based on substrate material being used.
- » When using screws to attach decking to framing, use two screws per every joist.

#### TREX AND STATIC ELECTRICITY

While this is not common, static electricity can occur on walking surfaces in dry climates or in areas where dry winds and dust-borne particles lay on the decking surfaces. Static electricity can build up on occupants walking across any composite decking surface, including Trex, then produce a small static shock if they touch a grounded metal surface such as a railing, door, etc.

This condition can be decreased greatly with the use of a product call ACL Staticide®. Two products tested were General Purpose Staticide® and Heavy Duty Staticide®. Both are effective in greatly reducing static electricity on Trex decking surfaces. Apply full strength, using a mop on a dry decking surface, and allow to dry. No rinsing, no diluting needed. Products are non-toxic, non-flammable, non-staining (will not change the colour of decking surface), completely biodegradable and safe to use. Product is water based and may require a second application after rain or other weather conditions. Over a period of time, the effect of static will dissipate naturally on the decking surface.

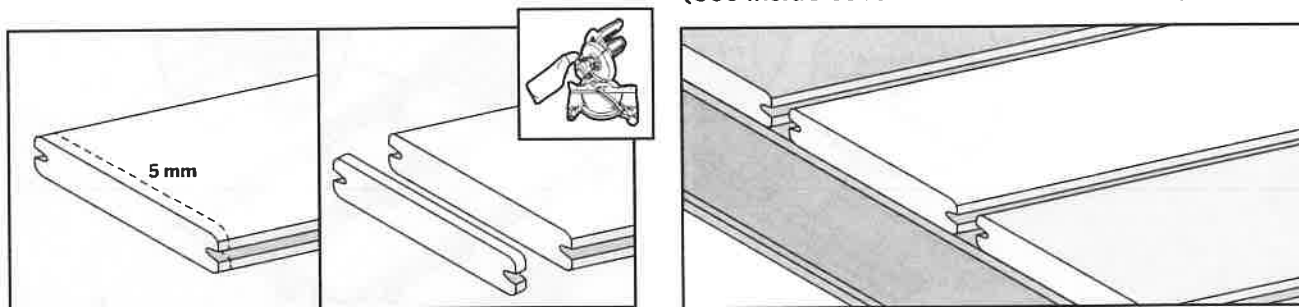
See link for more information on product: [http://www.aclstaticide.com/antistatic\\_coatings.html](http://www.aclstaticide.com/antistatic_coatings.html).

# INSTALLATION

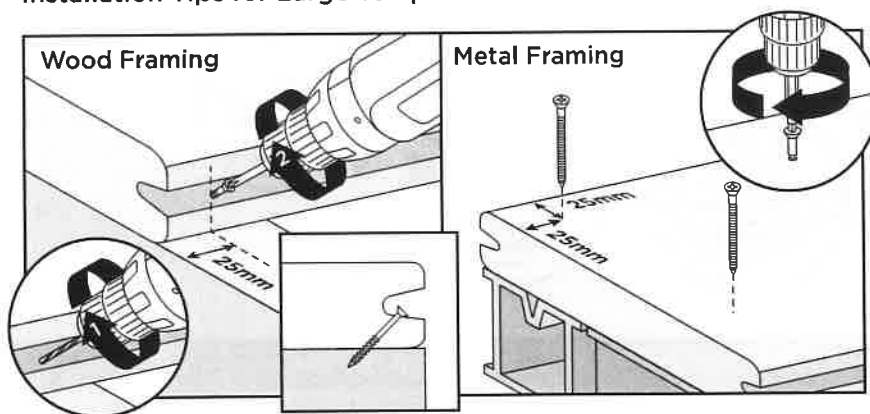
## INSTALLING TREX DECKBOARDS

**IMPORTANT:** You **MUST** clean cut boards on both ends (min. 5 mm).

To ensure an appealing mix of colour tones, mix and match all boards prior to installation. (See inside cover for additional details.)



### Installation Tips for Large Temperature Shifts within 24-hour Period



For wood framing, and if using Trex Universal Hidden Fasteners, pre-drill and toenail an approved screw at an angle in groove at both ends 25mm from board end and center of each board.

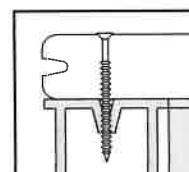
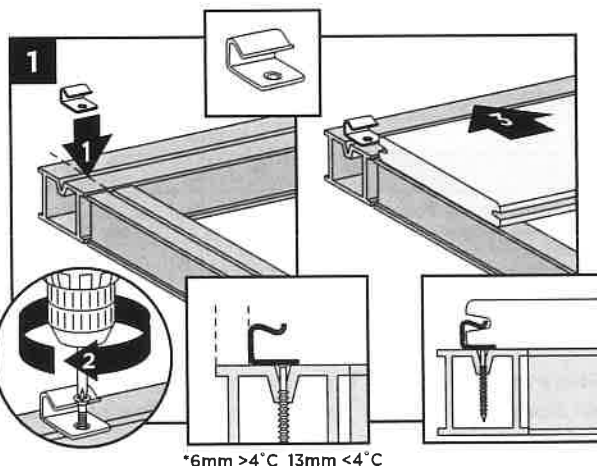
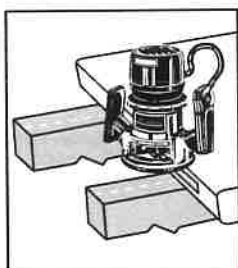
For metal framing, use two approved decking screws at board ends.

### Routing Square Edge Boards for Trex Hideaway Hidden Fasteners

**NOTE:** All Trex square edge profiles can be routed.

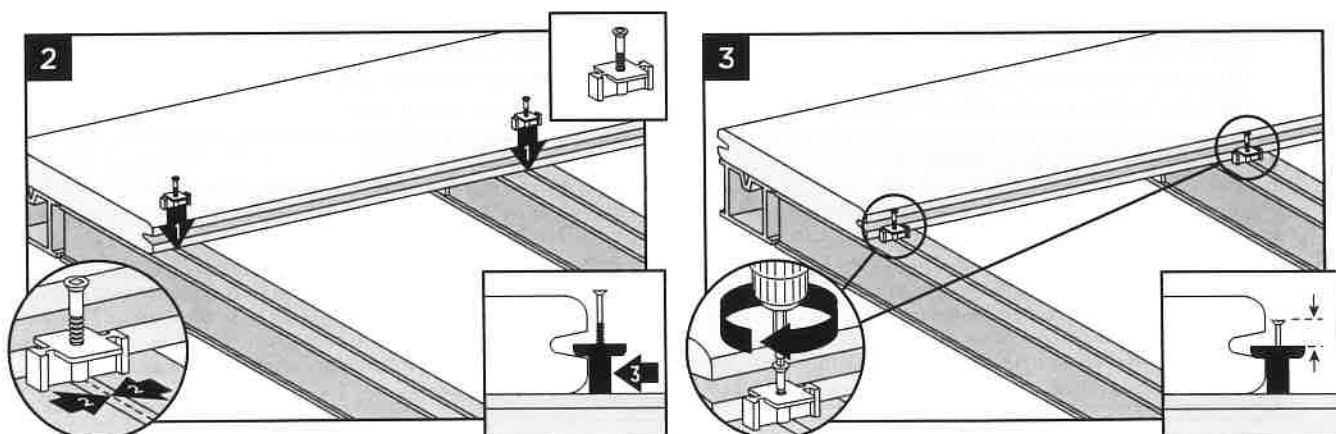
Using a Trex router bit with standard router:

1. Rout from bottom side of board.
2. Rout the entire length of the board, or at every intersection where board is over support joists.



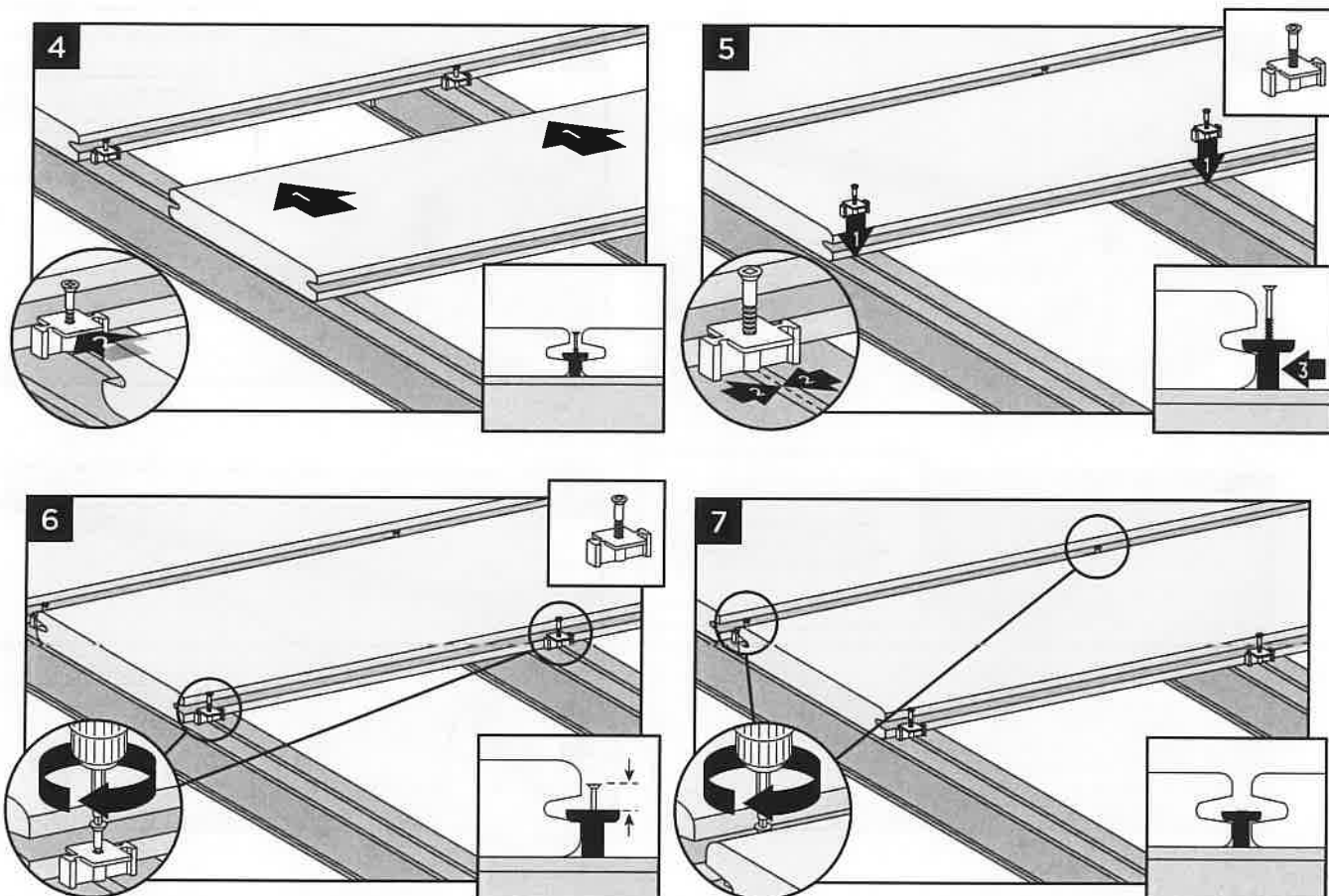
**Optional First Board Installation:**  
(one screw per every metal joist)

\*6mm >4°C 13mm <4°C

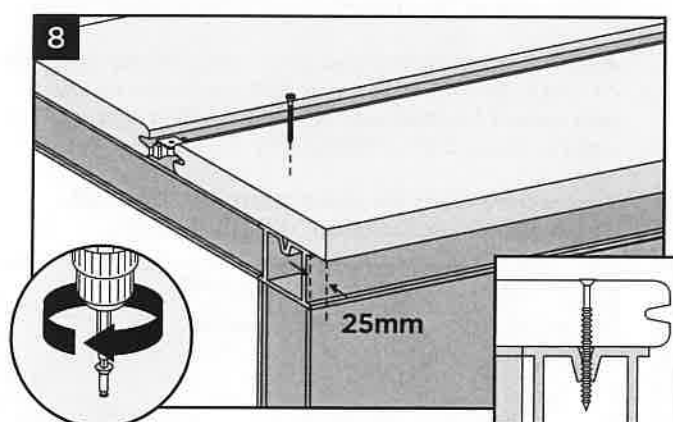


# INSTALLATION

## INSTALLING TREX DECKBOARDS/CONTINUED

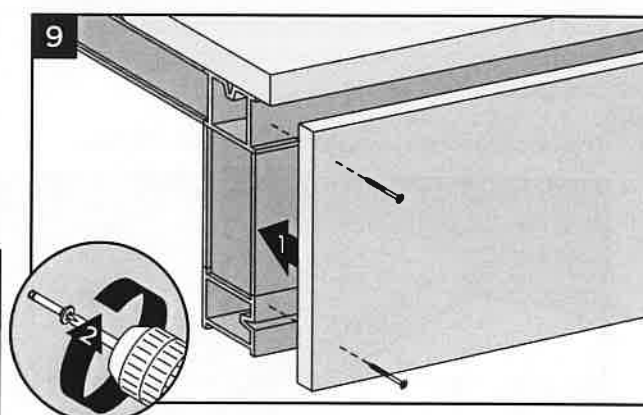


### Installing Last Deck Board (Square-Edge Board Recommended)



Route one side of square-edge board to use with hidden fasteners.

### Optional Fascia Installation

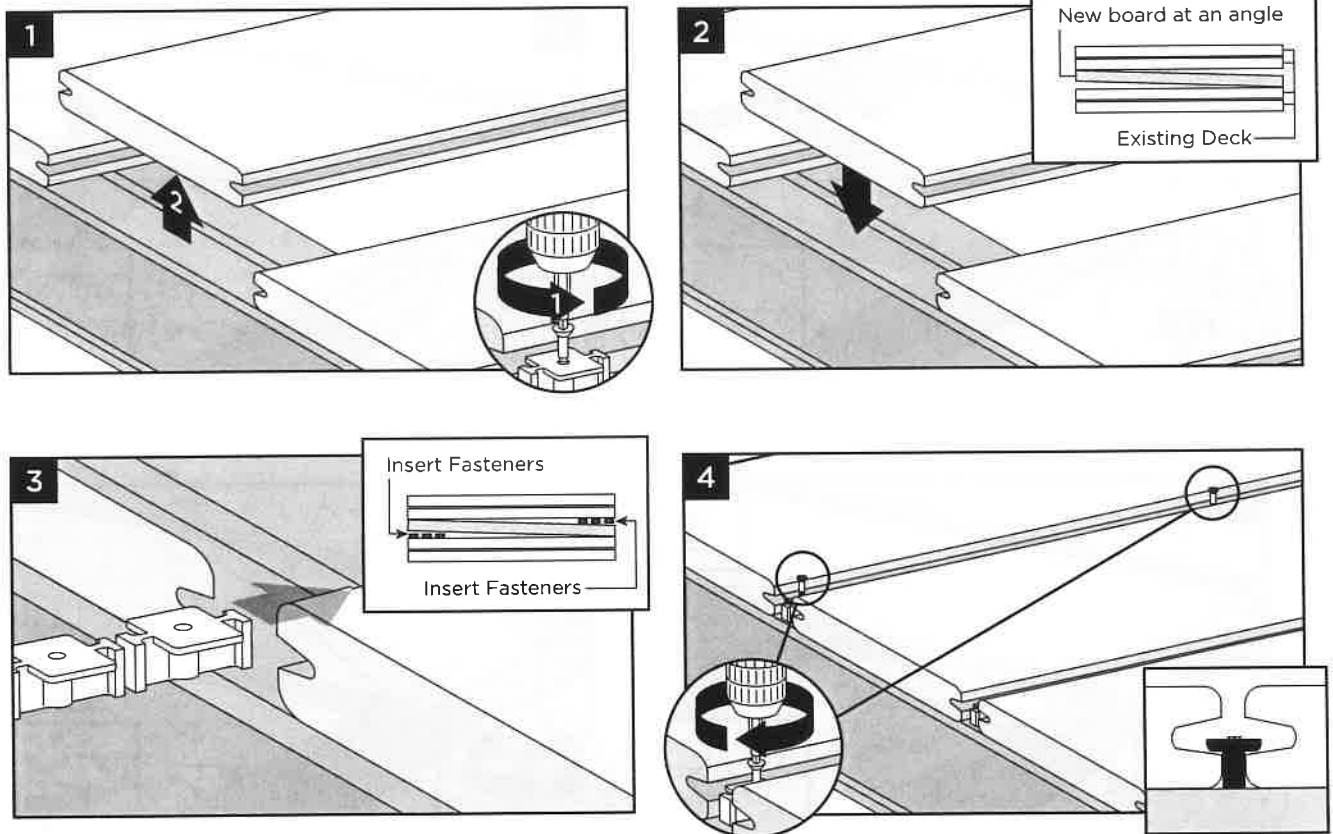


**NOTE:** Fascia wider than 60mm will require more detailed fastener requirements. Fascia boards are not allowed to carry loads from decking. Contact a Trex representative for more detail.



# INSTALLATION

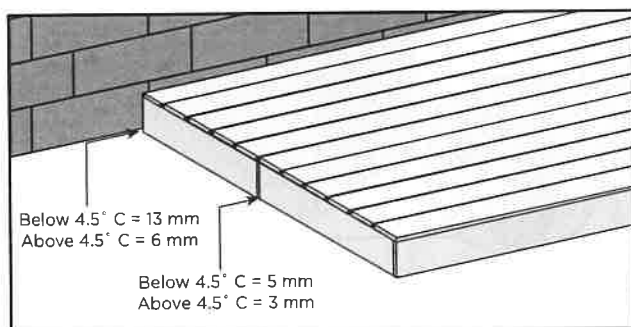
## REPLACING TREX BOARDS INSTALLED WITH TREX HIDEAWAY UNIVERSAL FASTENERS



## INSTALLING TREX FASCIA AND GAPPING

Trex Fascia, utilised around the perimeter of a deck, must be gapped with the same requirements as Trex decking to allow for air flow and expansion/contraction of the fascia.

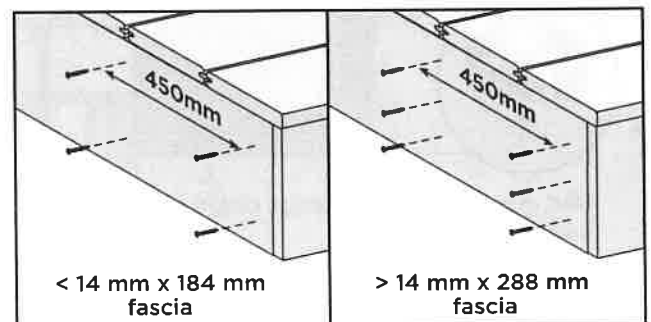
The fascia gapping requirements are as follows:



### When Using Approved Fascia Fasteners:

**NOTE:** The fasteners listed below can only be used with 14 mm x 184 mm or 14 mm x 288 mm fascia product, and cannot be used with decking product that is being used as fascia trim or stair risers.

Trex recommends the use of Starborn® Deckfast® Fascia System or SplitStop™ Fascia Screws.

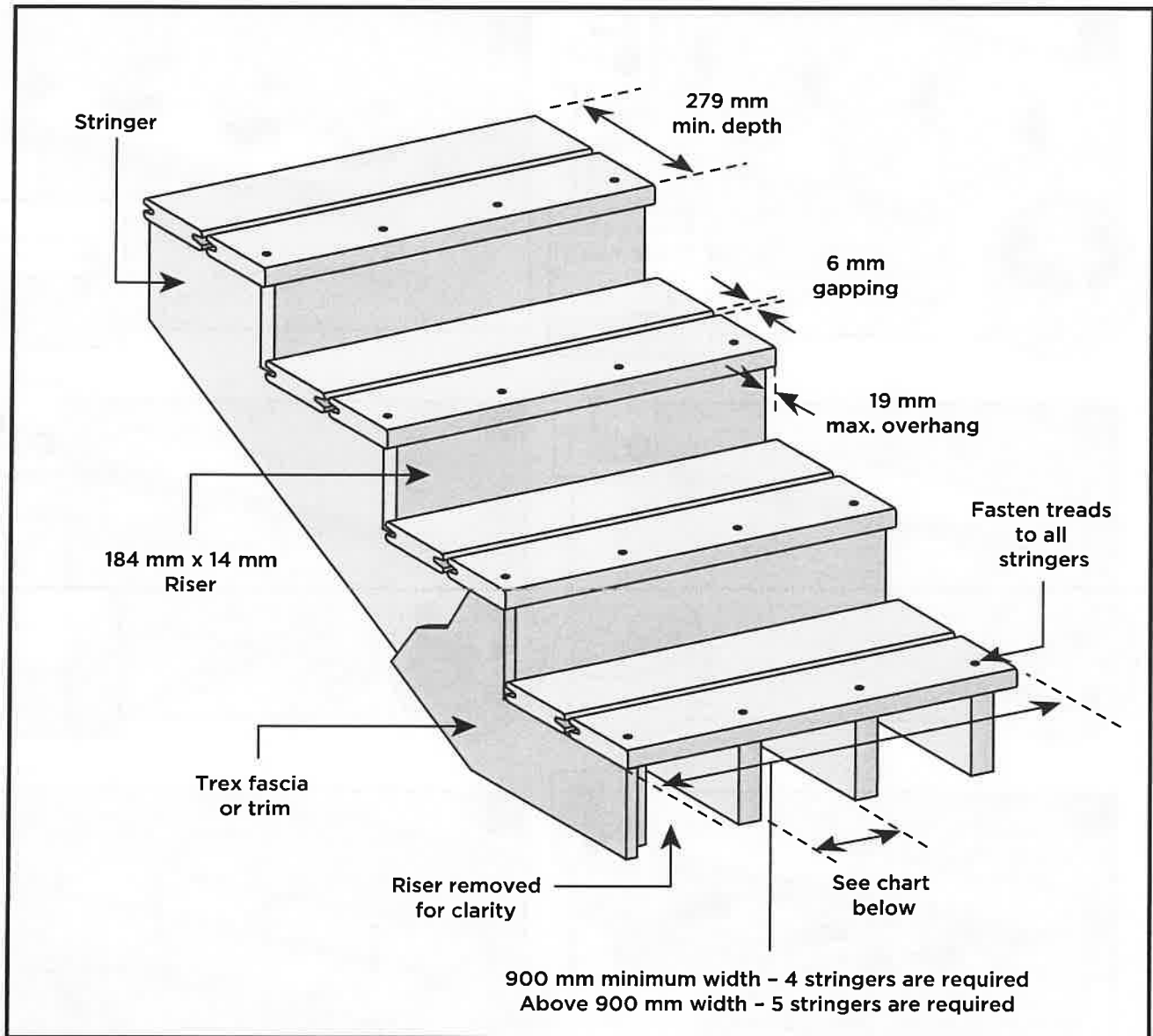




# INSTALLATION

## SPANNING REQUIREMENTS FOR TREX STAIRS

**NOTE:** Shown with wood framing.



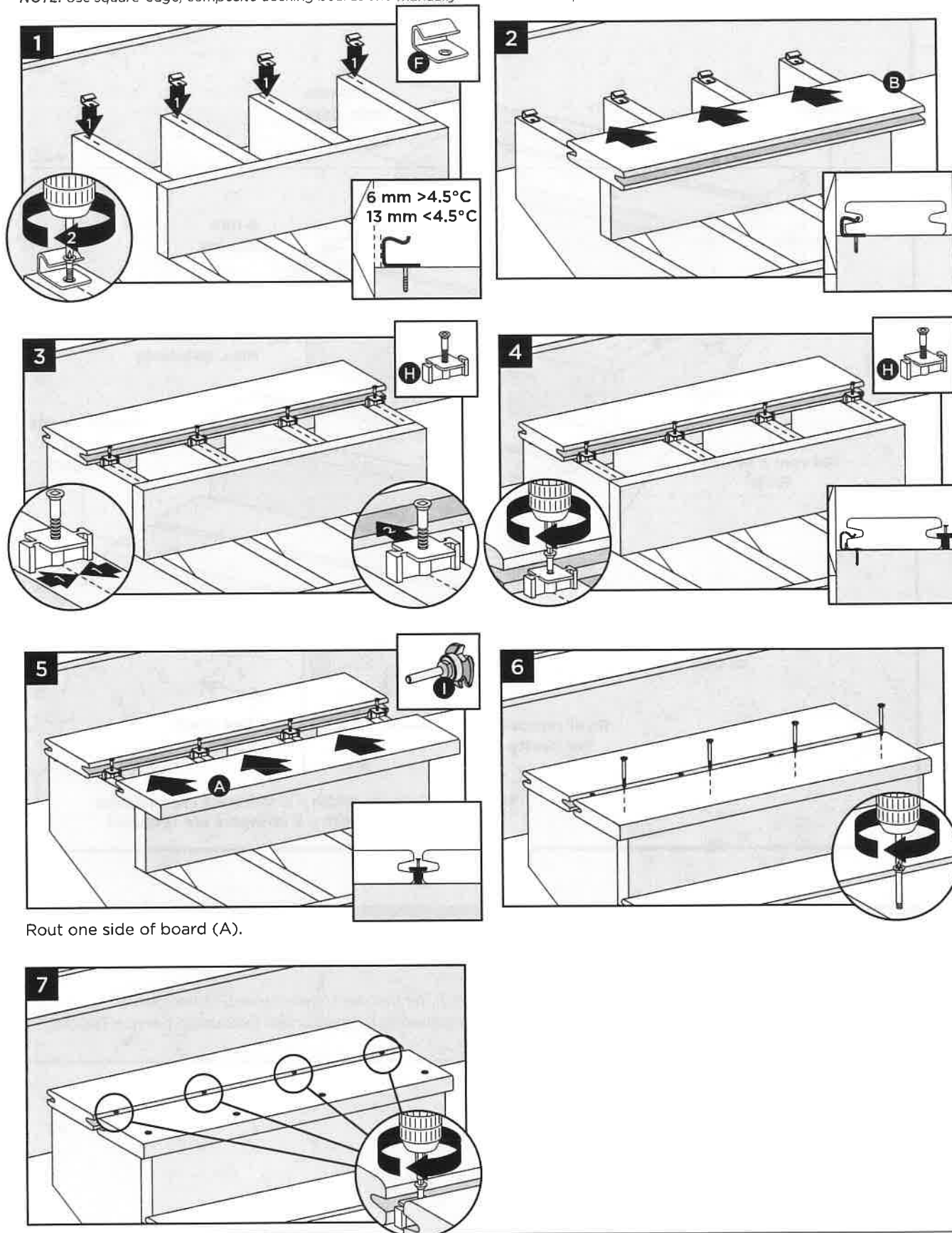
### MAXIMUM SPACING OF STAIR JOISTS (Centre-to-Centre)

For approved Australian spans, refer to <https://au.trex.com/trex-owners/downloads/> and view detailed span tables provided by SOTO Engineering located under Evaluation Service Reports.

# INSTALLATION

## INSTALLING TREX STAIR TREADS INSTALLED WITH TREX HIDEAWAY HIDDEN FASTENING SYSTEMS

**NOTE:** Use square-edge, composite decking boards and manually rout these on required sides to allow for use with hidden fasteners.



Route one side of board (A).

## CARE & CLEANING GUIDE

All exterior building materials require cleaning. Generally, soap and water is all that is required to clean Trex™ Transcend decking. For further information, see below.

Problem	Solution
Dirt and Debris	The affected area should be sprayed off with a hose to remove surface debris. Use warm soapy water and a soft bristle brush to remove dirt and debris from the embossing pattern.
Chalk Lines	High performance chalk lines may discolor the surface. Use only Irwin Strait-Line®* Dust-Off Marking Chalk (purple), available at Irwin.com
Tannins Due to Debris	Remove all debris from the deck using a hose or broom. Once the deck surface is dry, apply a Deck Brightener** to the deck as directed by the manufacturer. Deck Brighteners contain oxalic acid, which will also remove tannins.
Ice and Snow	A plastic shovel may be used to remove snow from the deck. Use calcium chloride or rock salt to melt the snow and ice from the deck surface.
Oil, Grease and Food	All food spills should be removed as soon as possible. <b>The surface must be cleaned within seven days to maintain the stain warranty.</b> To remove, spray off with a hose and use warm, soapy water and a soft bristle brush to remove spills from the embossing pattern.
Mold and Mildew	If debris such as pollen and dirt is allowed to remain on the deck surface, mold can feed on the biofilm. Using a hose and warm, soapy water with a soft bristle brush is recommended to remove the food source and mold.
Using a Pressure Washer (Concrete, Stucco or Ground-in Construction Dirt)	A pressure washer with <b>no greater</b> than 3100 psi***** that has a fan attachment/adjustment and soap dispenser may be used to remove dirt, concrete dust, or other types of construction dirt. Spray deck with soap, then follow with gently scrubbing each deck board with a soft bristle brush. Spray/rinse each individual deck board using a fan tip no closer than 8" from the decking surface. <b>RINSE THOROUGHLY</b> as if dirty water from cleaning is left to dry, this will cause a film to remain on the decking surface.
Maintaining Transcend and Select Railing	<b>NEVER</b> use acetone or other solvents on Trex™ Transcend or Select railing to maintain the beauty of the surface. For color transfer issues (from attachment of baluster spacer), use Mr. Clean® Magic Eraser Original® or Magic Eraser® Extra Power to help remove this.*** For small surface scratches, marks, or scuffs, use Dupli-Color Scratch Seal™ Clear Sealer Pen. ****

\*Strait-Line® is a registered trademark of Irwin Industrial Tool Company.

\*\*Use of products containing bleach or acid will lighten the surface of Trex™. Use in an inconspicuous area to determine whether you like the effect. Neither product will affect the structural integrity of Trex™.

\*\*\*Mr. Clean® and Magic Eraser™ are registered trademarks of The Procter and Gamble Company.

\*\*\*\*Scratch Seal™ Clear Sealer Pen is a registered trademark of Dupli-Color® Products Company.

\*\*\*\*\*Use of a pressure washer greater than 3100 psi could damage the boards and void the warranty.

## RECOMMENDED FASTENERS

Below is an updated listing of recommended fasteners for Trex™ Decking and Composite Fascia products.

Decking – Hidden Fasteners	Transcend®	Enhance®	Select®
Trex™ Hideaway® Universal Hidden Fastener	X	X	X
TigerClaw® TC-G Hidden Fastener	X	X	X
Cortex® Concealed Fasteners**	X		X
Starborn® Pro Plug® System for PVC & Composite (Epoxy Coated & Stainless) (2" are approved for sleeper & roof top applications only)	X		X
Simpson Strong Tie Deck Drive™ DCU Composite Screw & DCU Plugs (Handdrive only & must also use Auto-Set Drive Bit)	X		X
Decking – Composite Screws	Transcend®	Enhance®	Select®
FastenMaster® TrapEase 3 Ultimate Composite Deck Screw	X	X	X
Simpson Strong Tie Deck Drive™ DCU Composite Screw (Collated & Handdrive)	X	X	X
Quik Drive® Composi-Lok Deck Screw	X	X	X
SplitStop™ Titan III Composite Screw	X	X	X
Starborn® Cap-Tor® xd Epoxy Coated & Headcote® Stainless (available collated for Muro CH7390 Driver) (2" are approved for sleeper & roof top applications only)	X	X	X
Screw Products C-Deck Exterior Star Drive Composite Deck Screw	X	X	X
Phillips II Plus® Pozisquare	X	X	X
Muro T-Screw Torx Stainless Steel Screw – Collated (TX0212SFD or M-TX0300SEP)	X	X	X
Kameleon™ GRKFasteners™			X
FASCIA	Transcend®	Enhance®	Select®
Cortex® Hidden Fastening System for Fascia	X	X	X
Starborn® Pro Plug® System for Fascia – Epoxy & Stainless	X	X	X
Starborn® Deckfast® Fascia System – Epoxy Coated* and Headcote® Stainless	X	X	X
SplitStop™ Fascia Screws	X	X	X
Simpson Strong-Tie® Fascia Board Screw	X	X	X
FastenMaster® TrapEase® Fascia Fastener	X	X	X

- Trex™ recommends the use of two screws per joist.
- All recommended screws are designed to be installed flush with decking surface. DO NOT countersink screws.
- Use recommended stainless steel screws in any areas near bodies of saltwater.
- 2-3/4" or 3" screws can be used with Trex™ 2x6 product.
- Muro T-Screw M-TX0300SEP listed above is approved for 2x6 decking (can also be used with standard 1" (decking as listed above). This screw is collated and can be used with Muro Auto Feed Screw Gun FDVL41 Speed Driver. (NOTE: THIS IS NOT A COLOR-MATCH SCREW.)
- All decking products are approved for use with Trex™ Hideaway Hidden Fasteners; thus all decking products can be routed according to our instructions.
- Simpson Strong-Tie Deck Drive DCU Composite Screw in collated versions works with Quik Drive gun.
- Fascia system screws listed above can only be used with composite fascia profiles and cannot be used with standard thickness decking boards used as fascia. Use stainless steel fascia screws near water applications.
- \*\* Not for use with sleeper systems. Refer to FastenMaster literature for more information.
- Contact 1-800-BUY-TREX for Escapes fastener recommendations.

**If any condition occurs which is attributable to the use of non-recommended fasteners, such condition shall not be covered under the Trex™ Limited Warranty.**

FastenMaster® TrapEase® and Cortex® are registered trademarks of OMG, Inc.  
 Quik Drive® is a registered trademark and Composi-Lok™ is a trademark of Simpson Strong-Tie Company, Inc.  
 DeckFast® Cap-Tor® xd and HeadCote® Cap-Tor® xd are registered trademarks of Starborn Industries Inc.  
 C-Deck Exterior Star Deck Composite Deck Screw is a product of Screw Products Inc.  
 Phillips II Plus® is a registered trademark of Phillips Fasteners LLC.  
 SplitStop™ is a trademark of Titan Metal Werks, Inc.