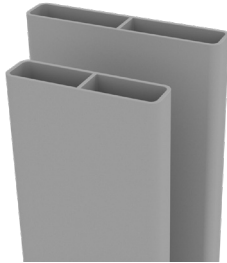




# VERTICAL SLAT SCREENING VARIABLE SLAT AND SPACING HINGED PEDESTRIAN GATE

## FABRICATION OVERVIEW



65mm Slat or 90mm Slat



Quickscreen frame with  
snap-on cover



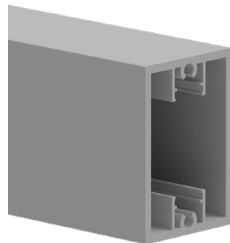
Gate Side Frames  
with infill



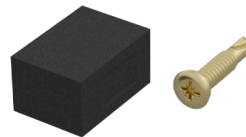
Gate Insert



Heavy Duty U Channel



Top/Bottom Heavy  
Duty Rail



Screw and Spacer Block Kit  
includes 50x screws & 10x spacer blocks



Hex head screws  
12g x 65mm  
(pack of 10)

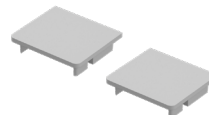


Tru close heavy duty  
hinge pair  
(rated for gates up to 70kg)

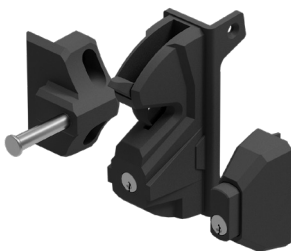
OR



KWIKfit hinge  
Aluminium



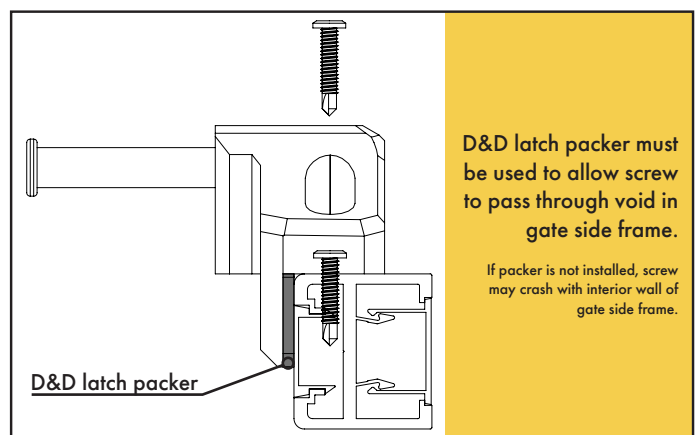
Top Caps

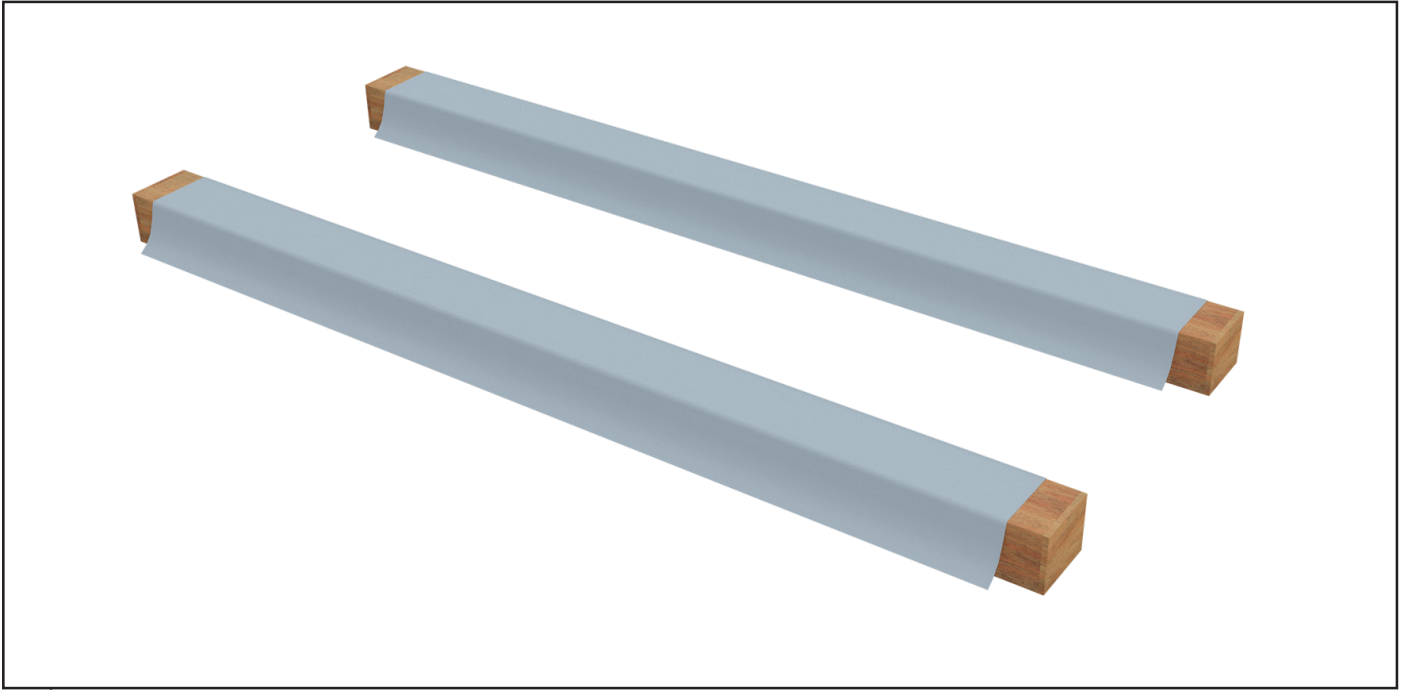


Lokk Latch  
Deluxe

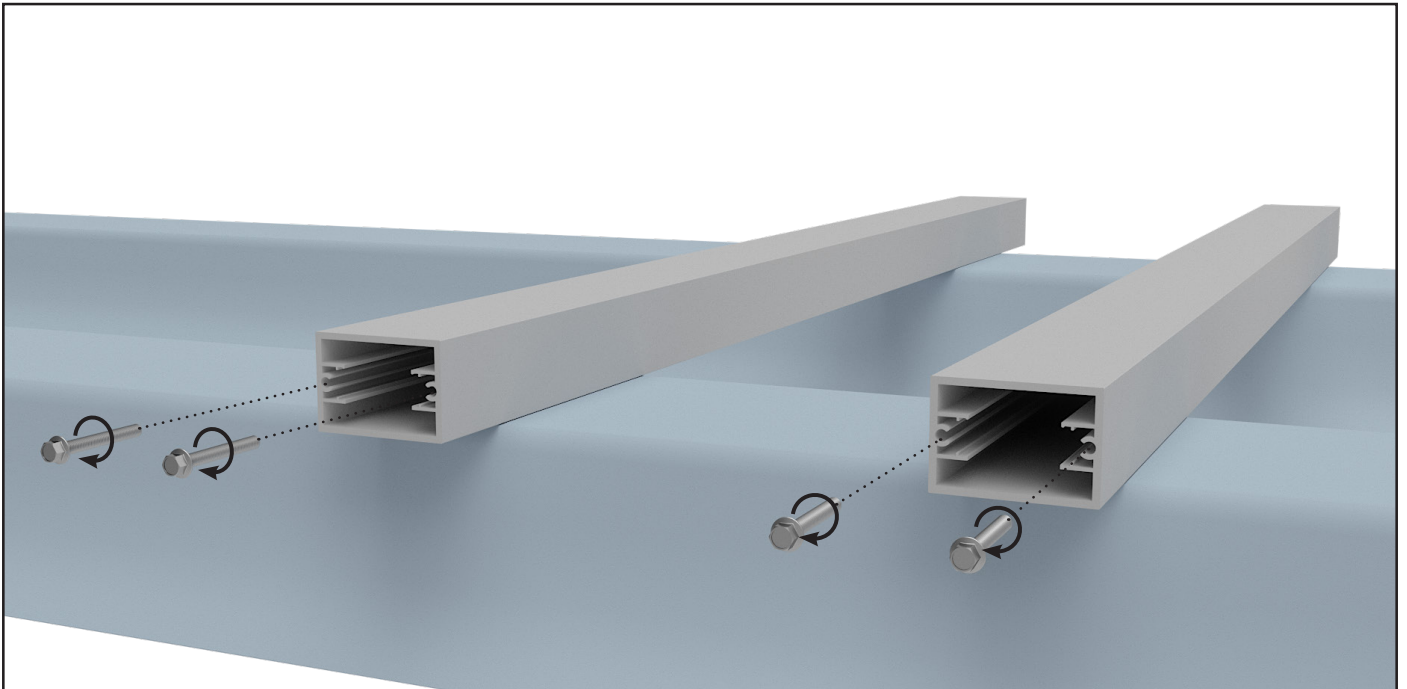


D&D Latch Packer  
(only required if using D&D  
Lokk Latch Deluxe)





- 1 Set up the gate fabrication area on a flat, protected surface or padded bearers.

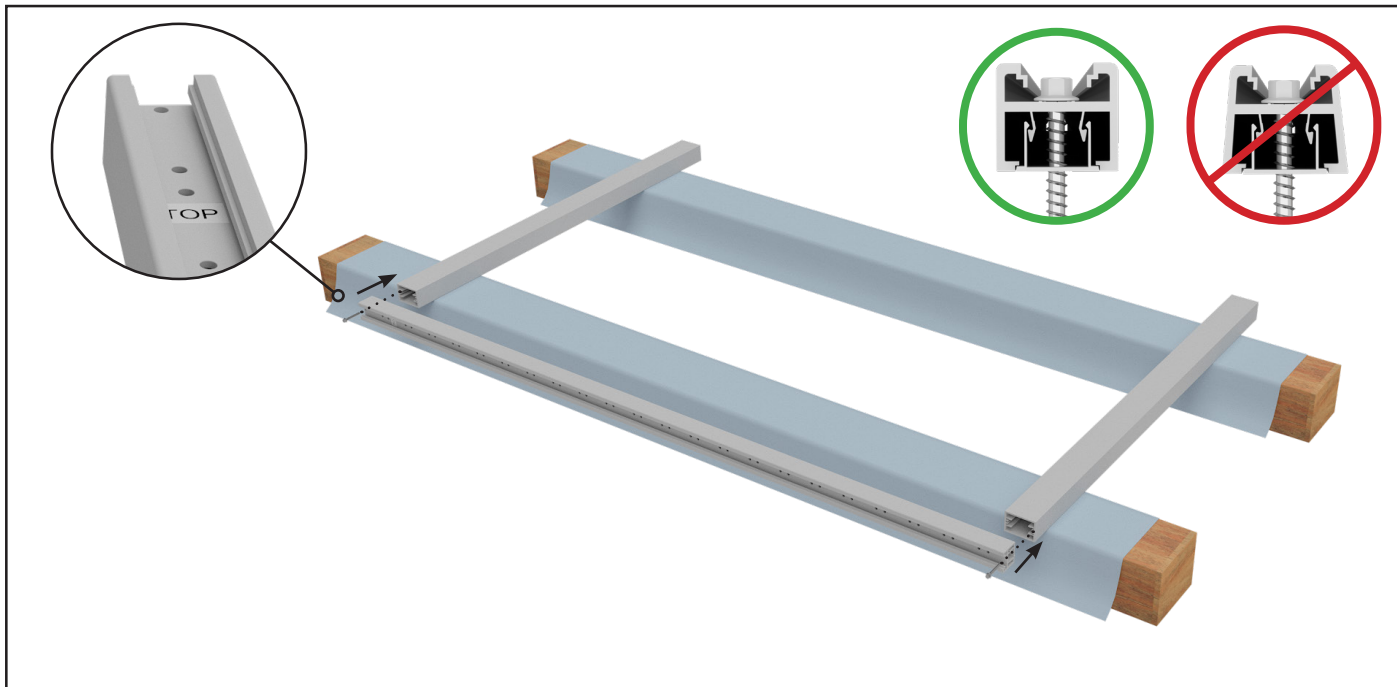


- 2 Use 1 x hex head screw to pre-tap all screw flutes in the top rail and bottom rail at both ends. This will aid with assembly later on.

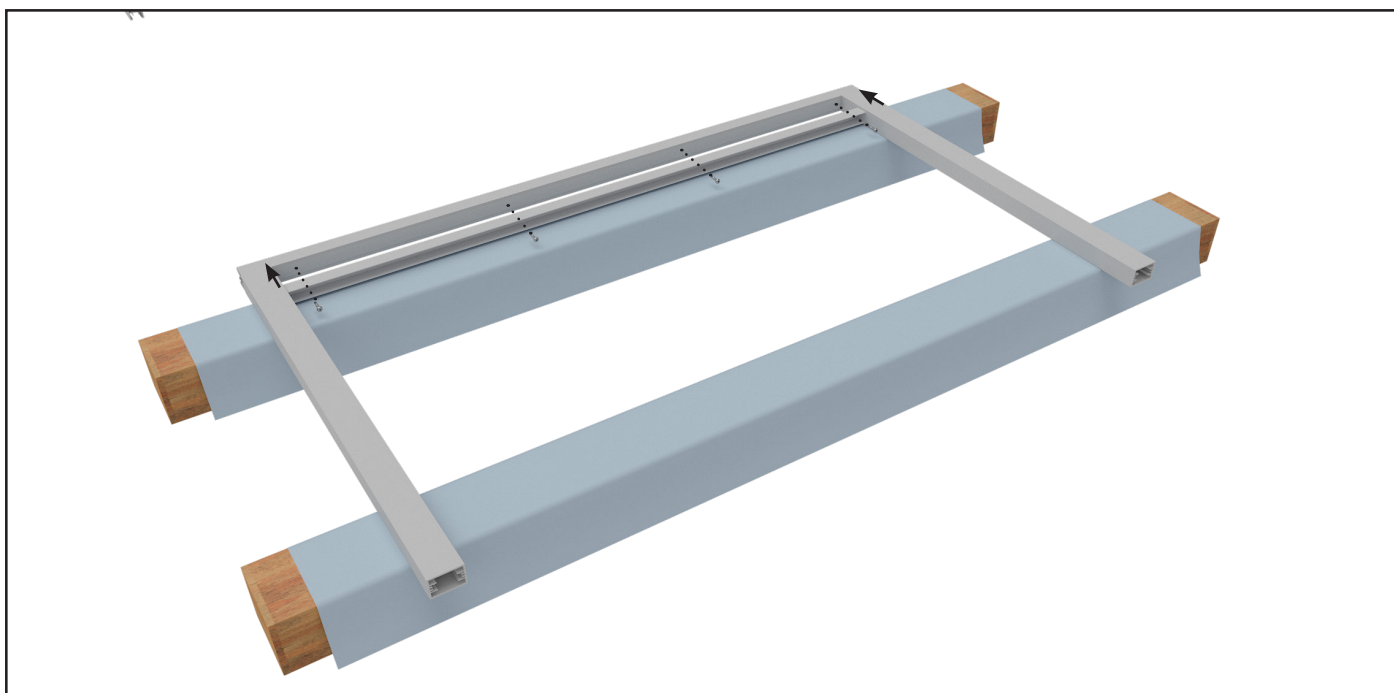
NOTE: The total gate width is not to exceed 1,300mm.



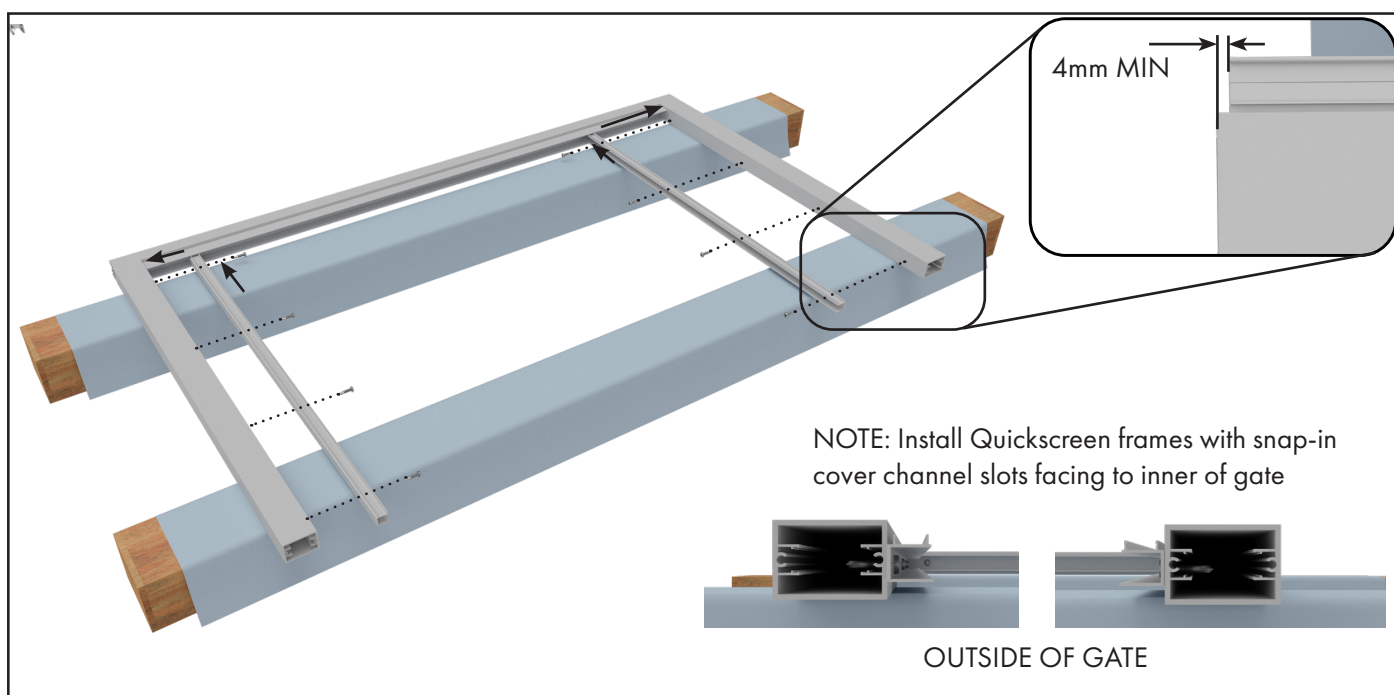
- 3 Select side frames with infills and set in place with matching top stickers for left and right frames.  
NOTE: The total gate height is not to exceed 2,200mm.



- 4 Attach 1 x gate side frame to top & bottom rails with 1 x hex screw on each side.  
**NOTE: DO NOT OVER TIGHTEN SCREWS!**

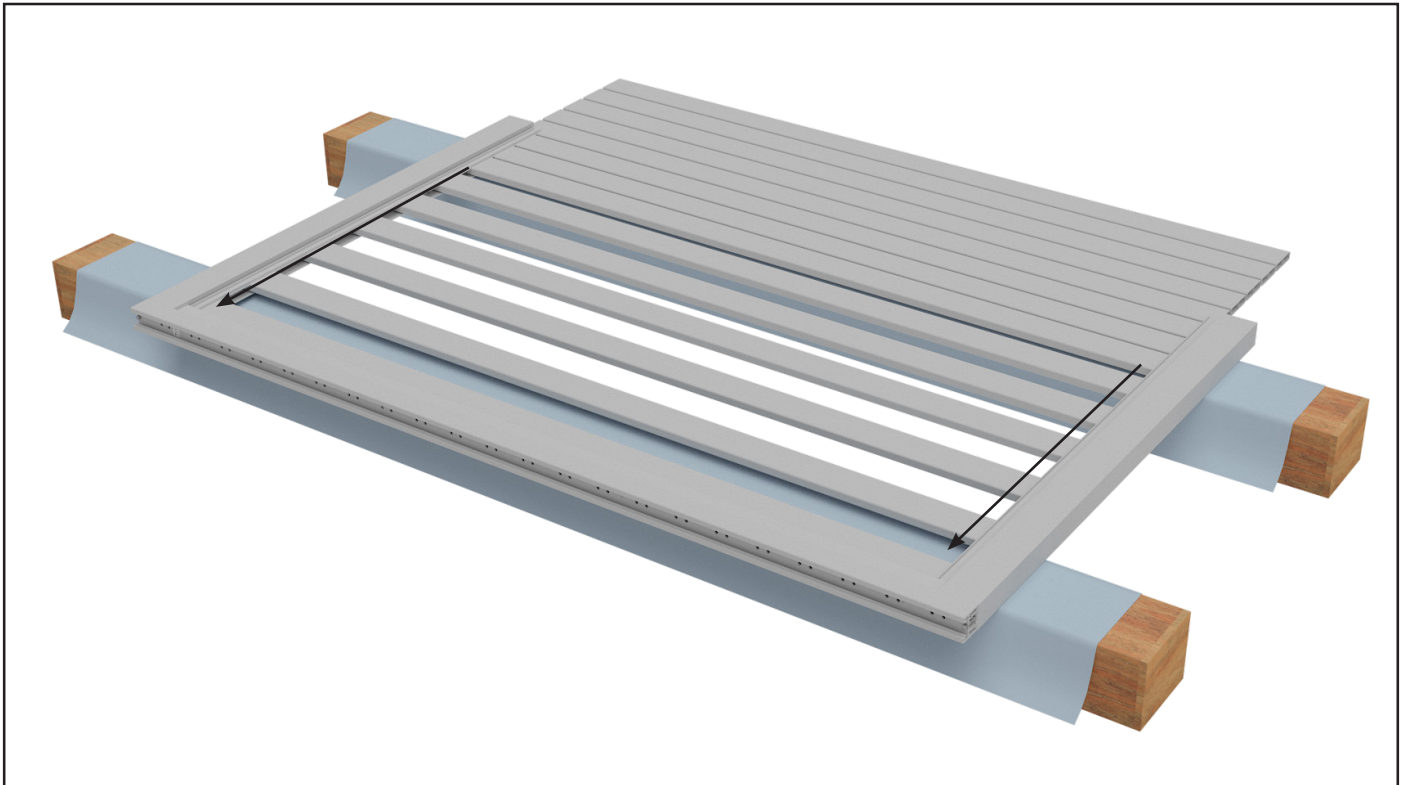


- 5 Using the Quickscreen kit screws, attach the heavy duty U-Channel centrally to the gate side frame.



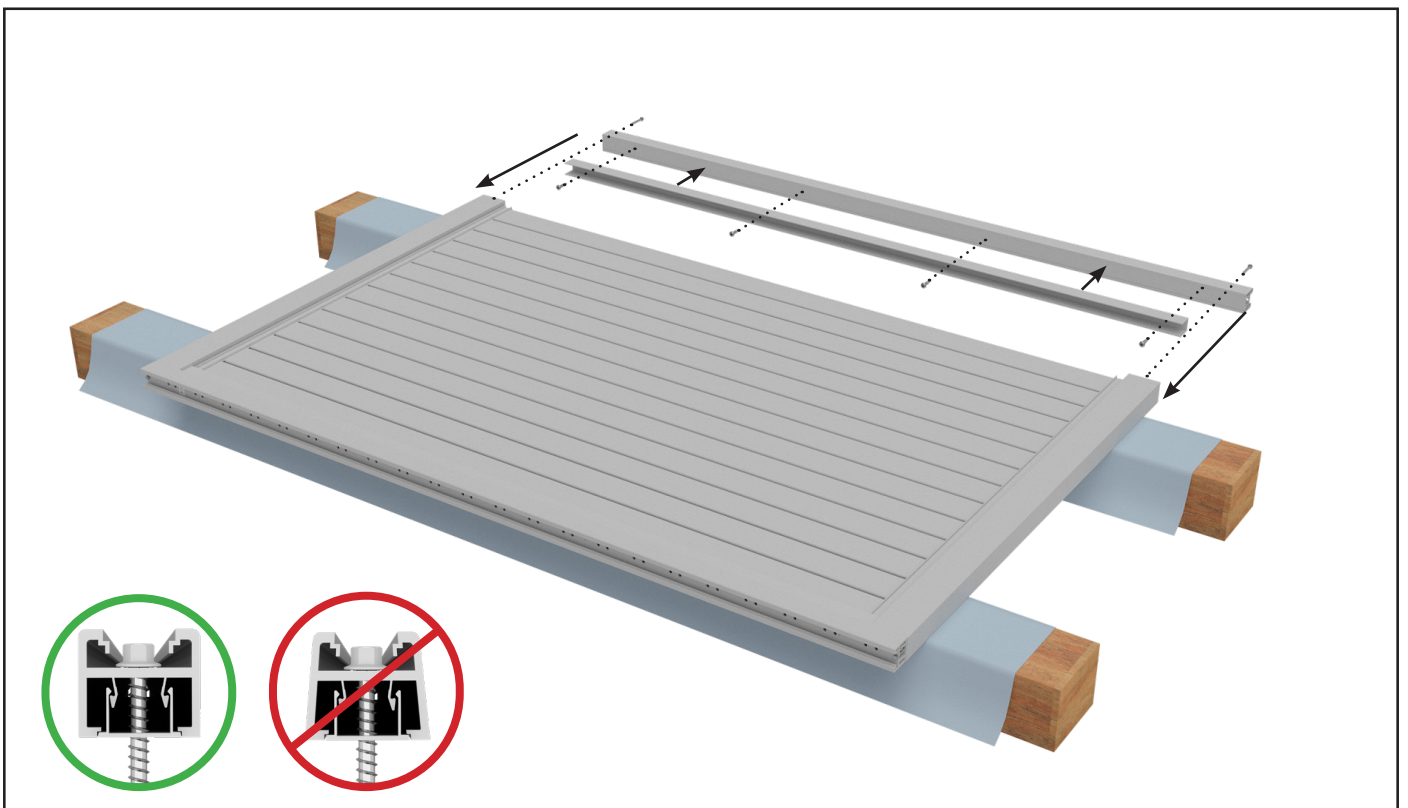
- 6 Using the Quickscreen kit screws, attach the Quickscreen frame to the top and bottom gate rails, ensuring insertion into the vertical heavy duty U channel.

NOTE: Ensure Quickscreen frames run parallel with the gate rails from the starting point in the U Channel and stop at least 4mm short from the open end of top and bottom rails.

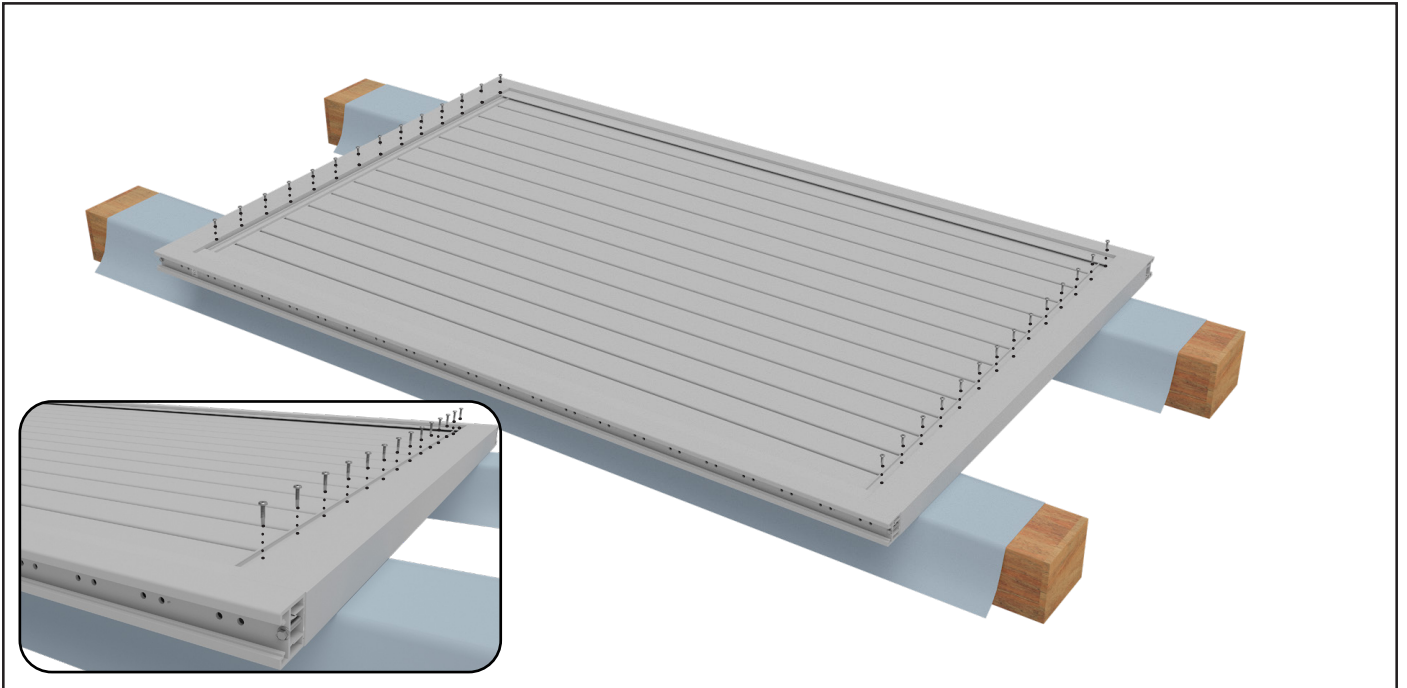


- 7 Slide all slats into top & bottom rails.

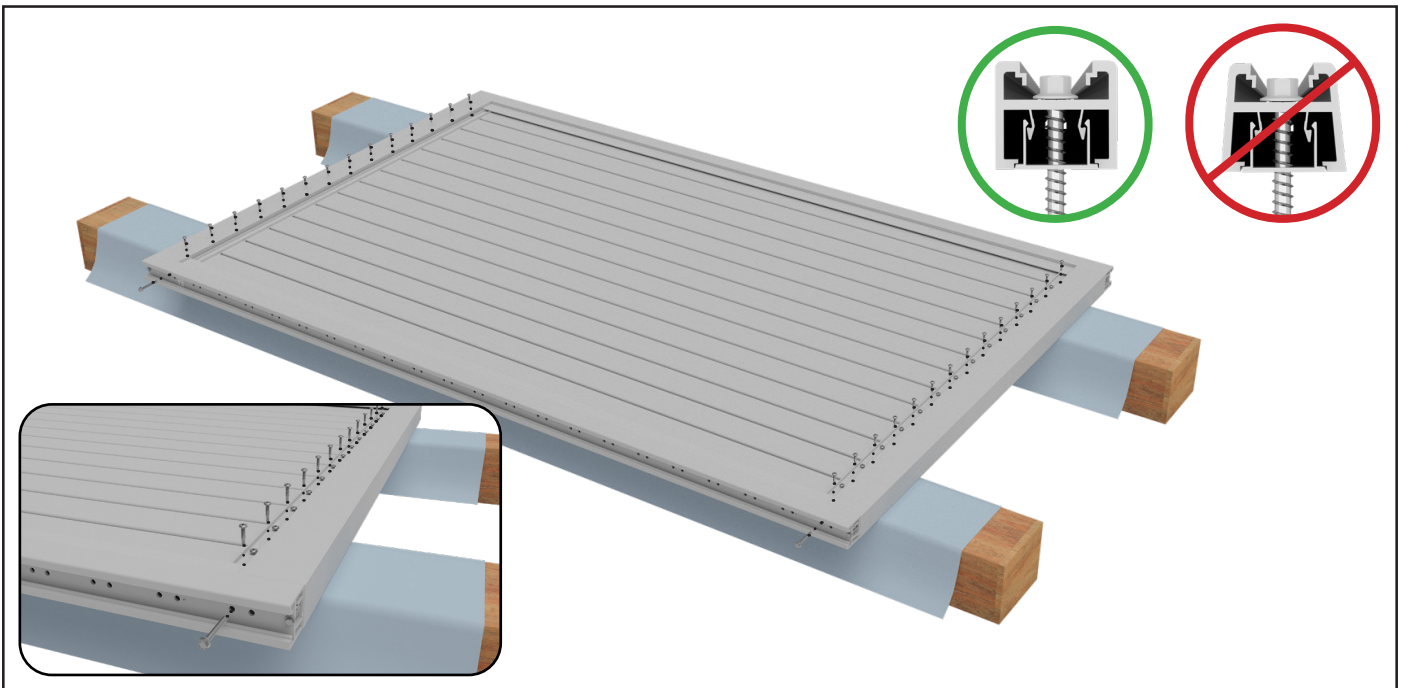
**NOTE: DO NOT AFFIX SLATS WITH SCREWS AT THIS STAGE**



- 8 Attach the remaining heavy duty U Channel to the second gate side frame in the same position as Step 5. Attach the second gate side frame to the top and bottom rails with 1 x hex screw on each end. Measure diagonally to ensure the gate is square.



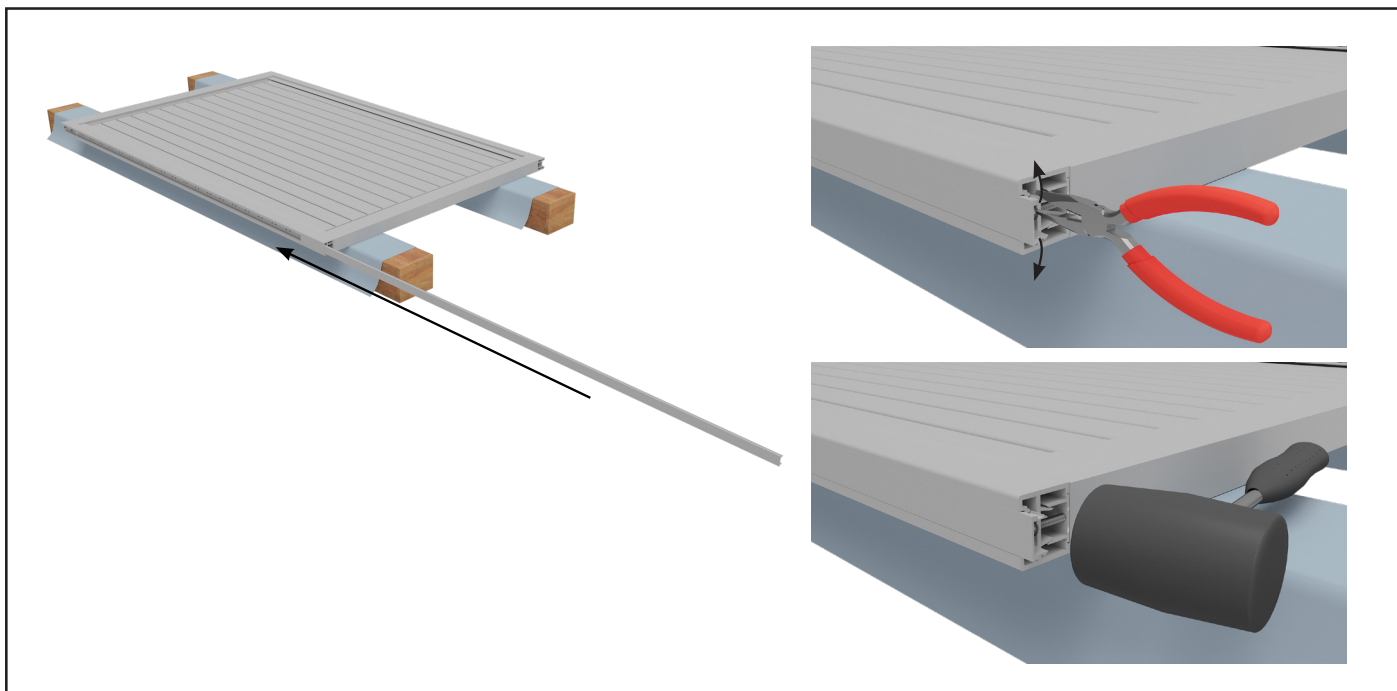
- 9 Space all slats as required, then fix each end of the slats with one screw at each end using Quickscreen kit screws (discarding the spacer blocks).



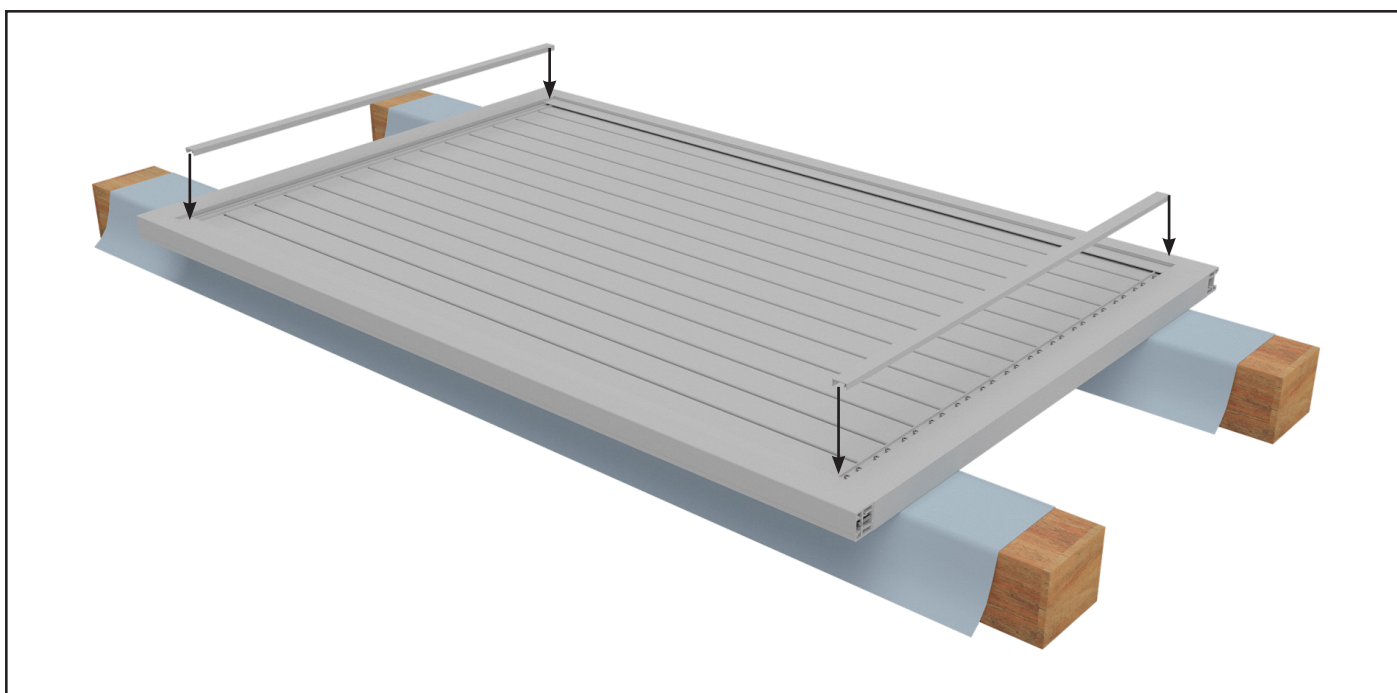
- 10 Re-measure diagonally to ensure gate is square, then add a second screw on both ends of all slats to secure. Complete by adding a second hex screw to each corner of the gate side frames.

**NOTE: DO NOT OVER TIGHTEN HEX SCREWS**

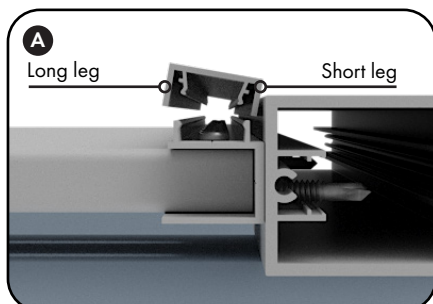




- 11 Slide 2 x gate inserts past the end of the gate side frame (approx 10mm); then, using pliers, bend the inner legs of the gate insert slightly outwards. Tap the gate insert back to level with gate side frames. This will prevent the outer insert from sliding down when the gate is in operation.

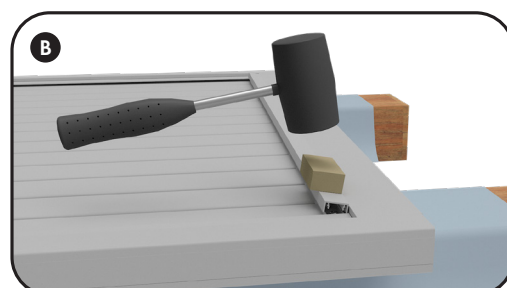


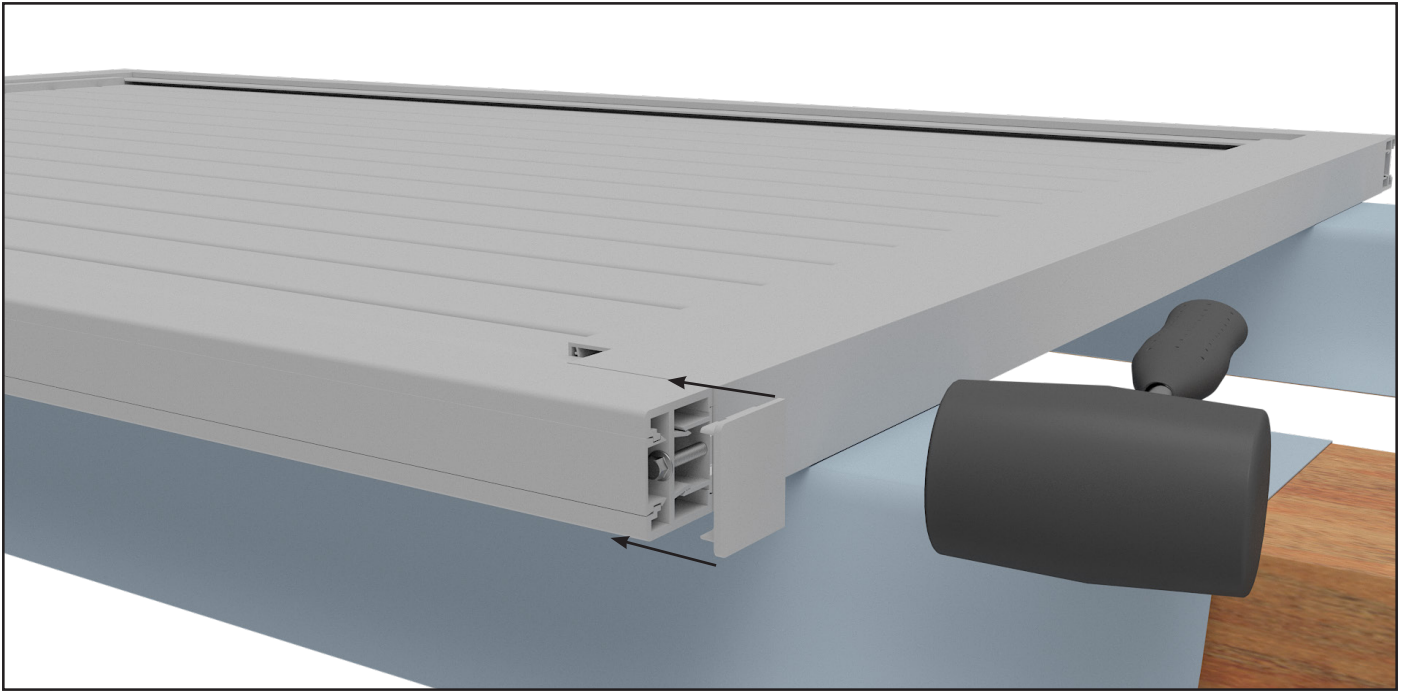
- 12 Attach the snap-on concealing covers to hide slat screws.



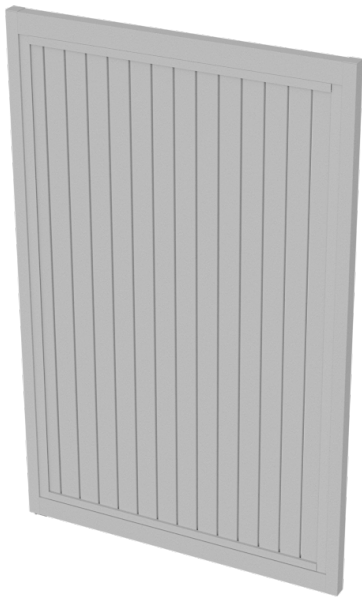
TIP: A) Engage shorter leg of snap-on cover first. At this point, the snap-on cover will be sitting off the frame on an angle, the longer leg must be at open side of frame.

B) Starting from one side and working your way along, use a wood block and a hammer/mallet to tap the longer leg into place. A short, sharp tap may be required to engage the long leg.

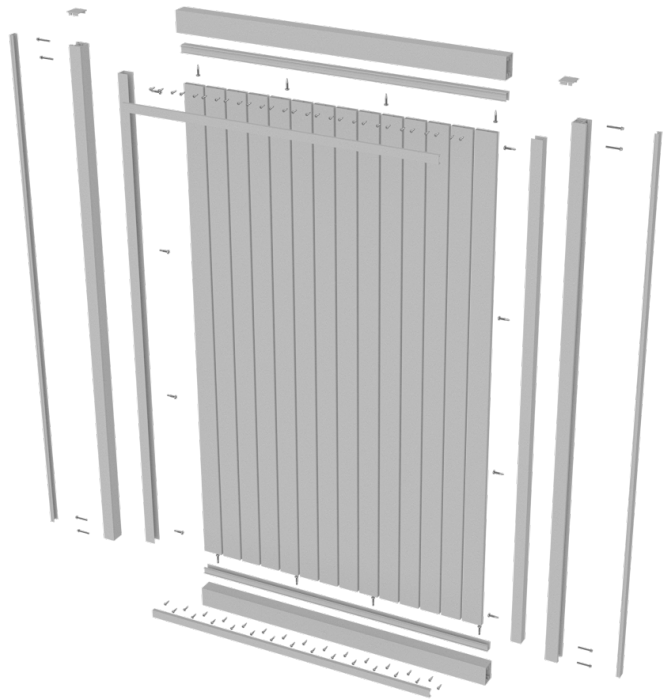




13 Insert top caps.



COMPLETE GATE



EXPLODED VIEW