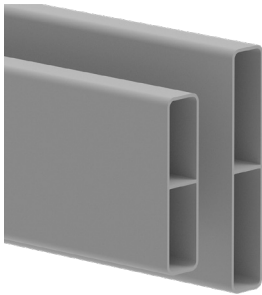


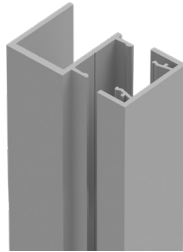


HORIZONTAL SLAT SCREENING VARIABLE SLAT AND SPACING HINGED PEDESTRIAN GATE

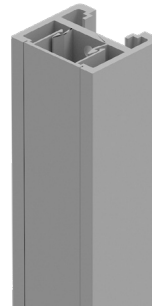
FABRICATION OVERVIEW



65mm Slat or
90mm Slat



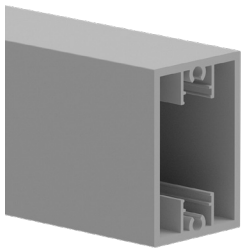
Quickscreen frame
with snap-on cover



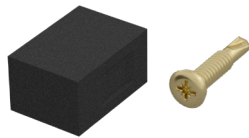
Gate Side Frames
with infill



Gate Insert



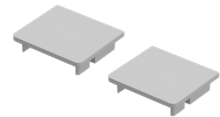
Top/Bottom Heavy
Duty Rail



Screw and Spacer Block Kit
includes 50x screws & 10x spacer blocks



Hex head screws
12g x 65mm
(pack of 10)



Top Caps

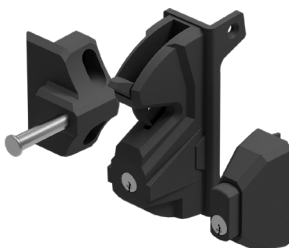


Tru close heavy duty
hinge pair
(rated for gates up to 70kg)

OR



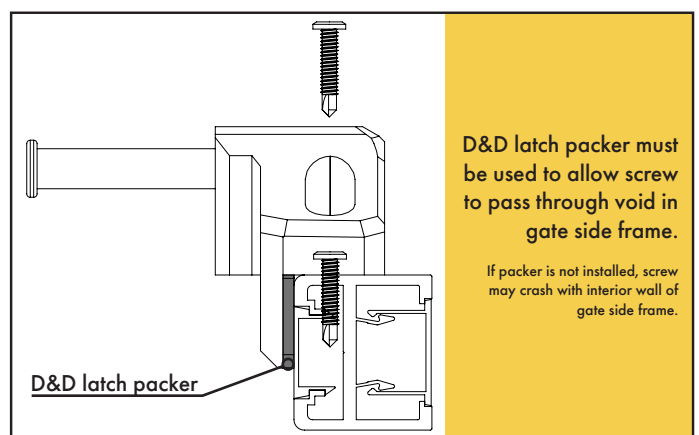
KWIKfit hinge
Aluminium

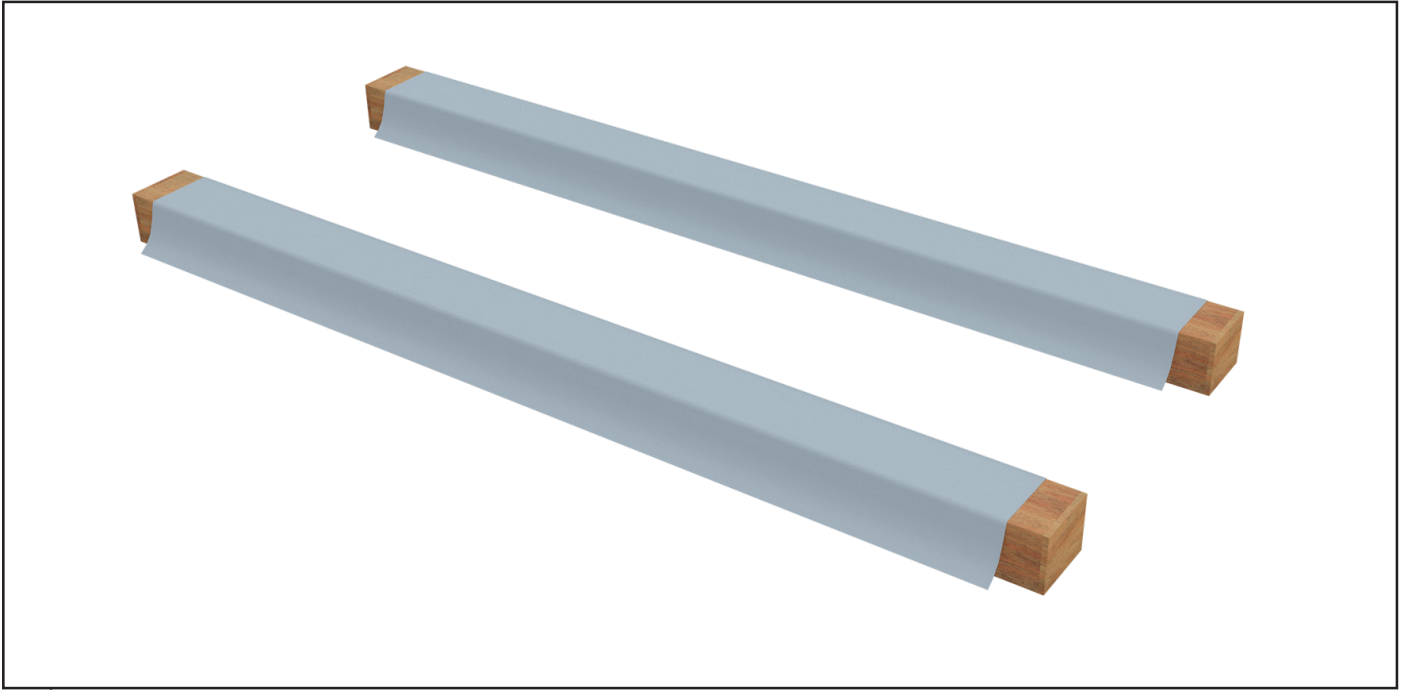


Lokk Latch
Deluxe

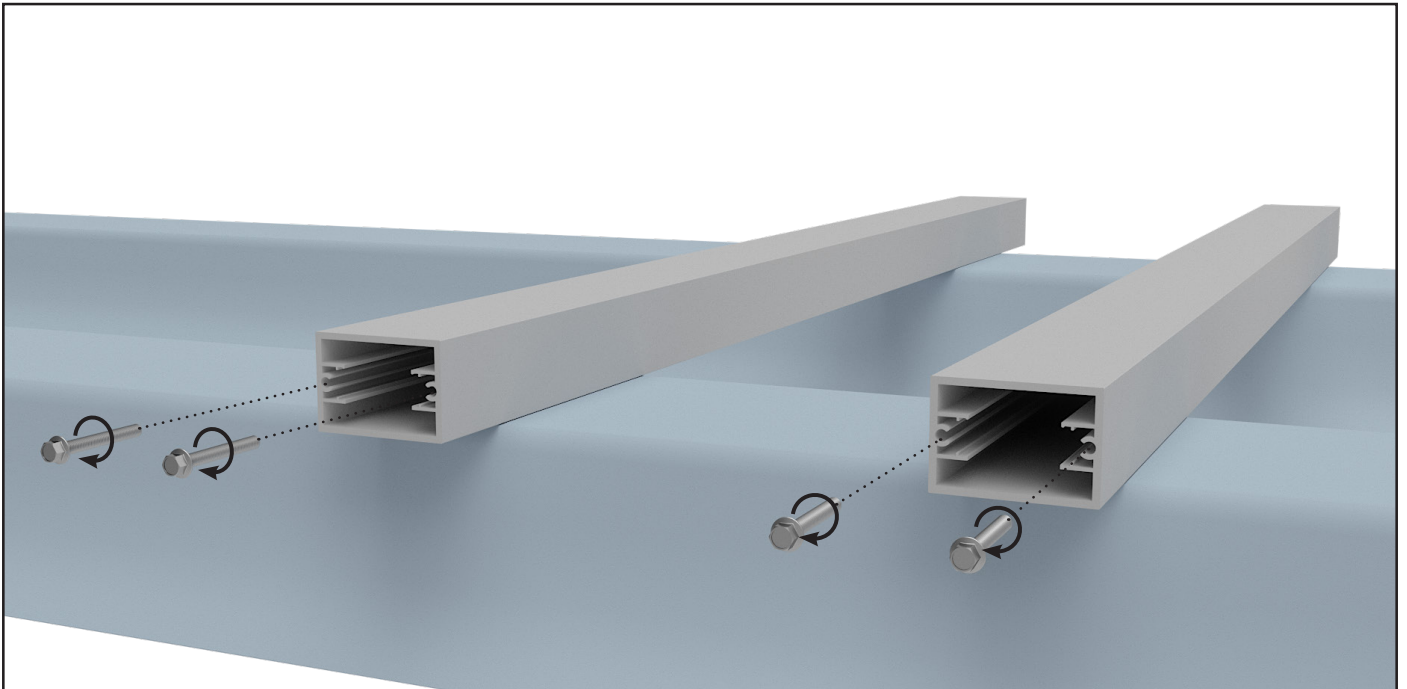


D&D Latch Packer





- 1 Set up the gate fabrication area on a flat, protected surface or padded bearers.



- 2 Use 1 x hex head screw to pre-tap all screw flutes in the top rail and bottom rail at both ends. This will aid with assembly later on.

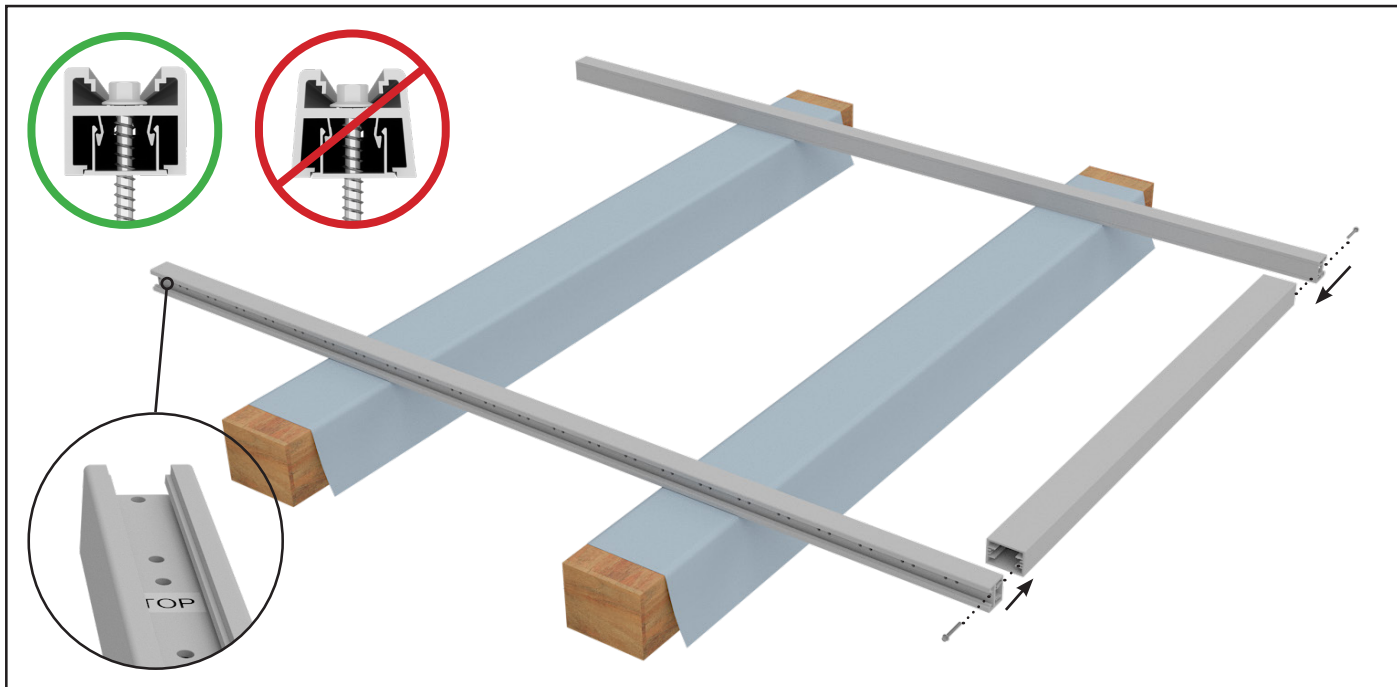
NOTE: The total gate width is not to exceed 1,300mm.



- 3 Select side frames with infills and set in place with matching top stickers for left and right frames.

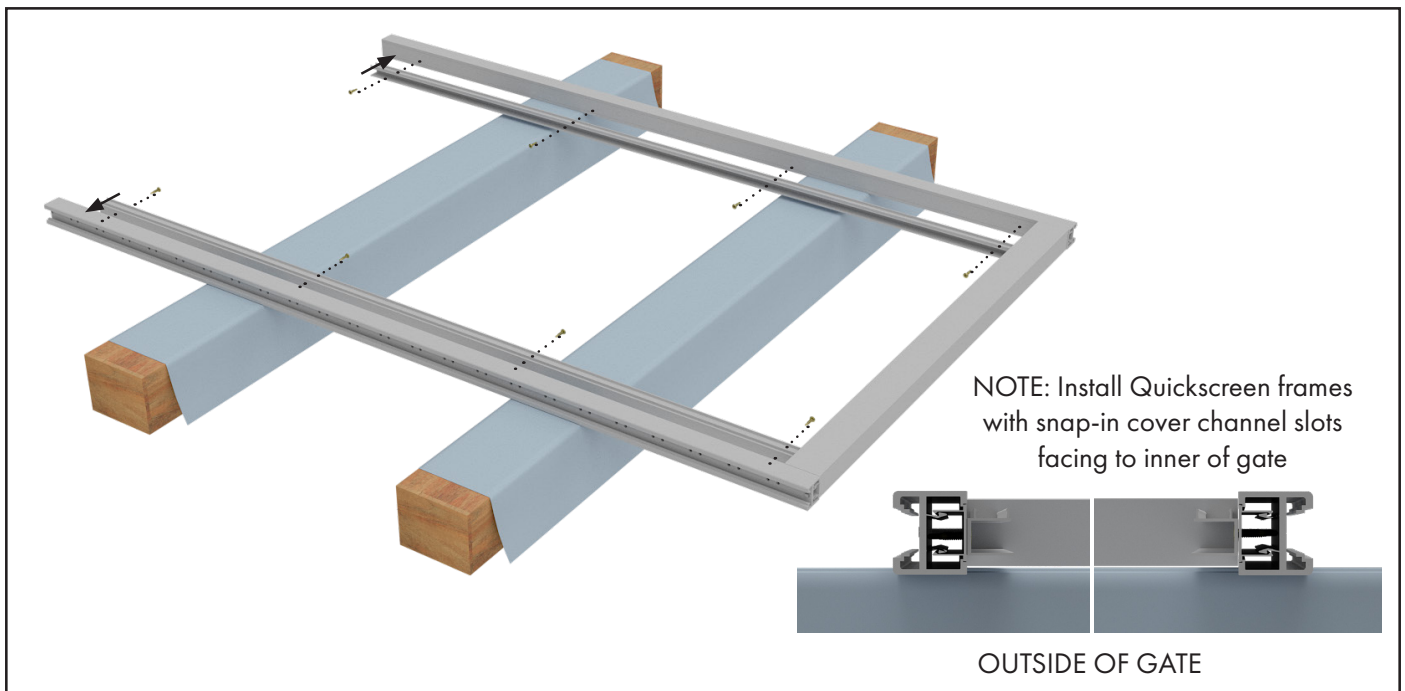
NOTE: The total gate height is not to exceed 2,200mm.

IMPORTANT: See Appendix 1 regarding gate height placement if using 90mm slats.

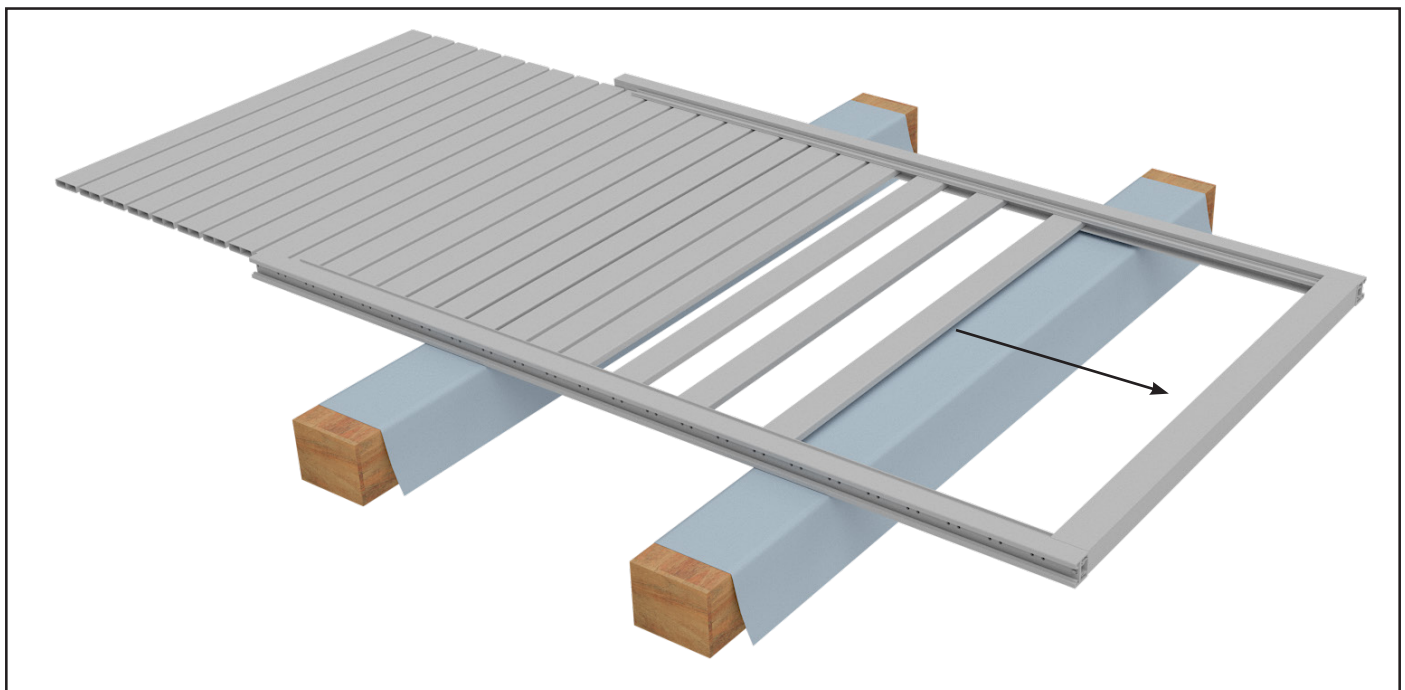


- 4 Attach 1 x Heavy Duty Rail to both Gate Side Frames using 1 x hex head screw each side.

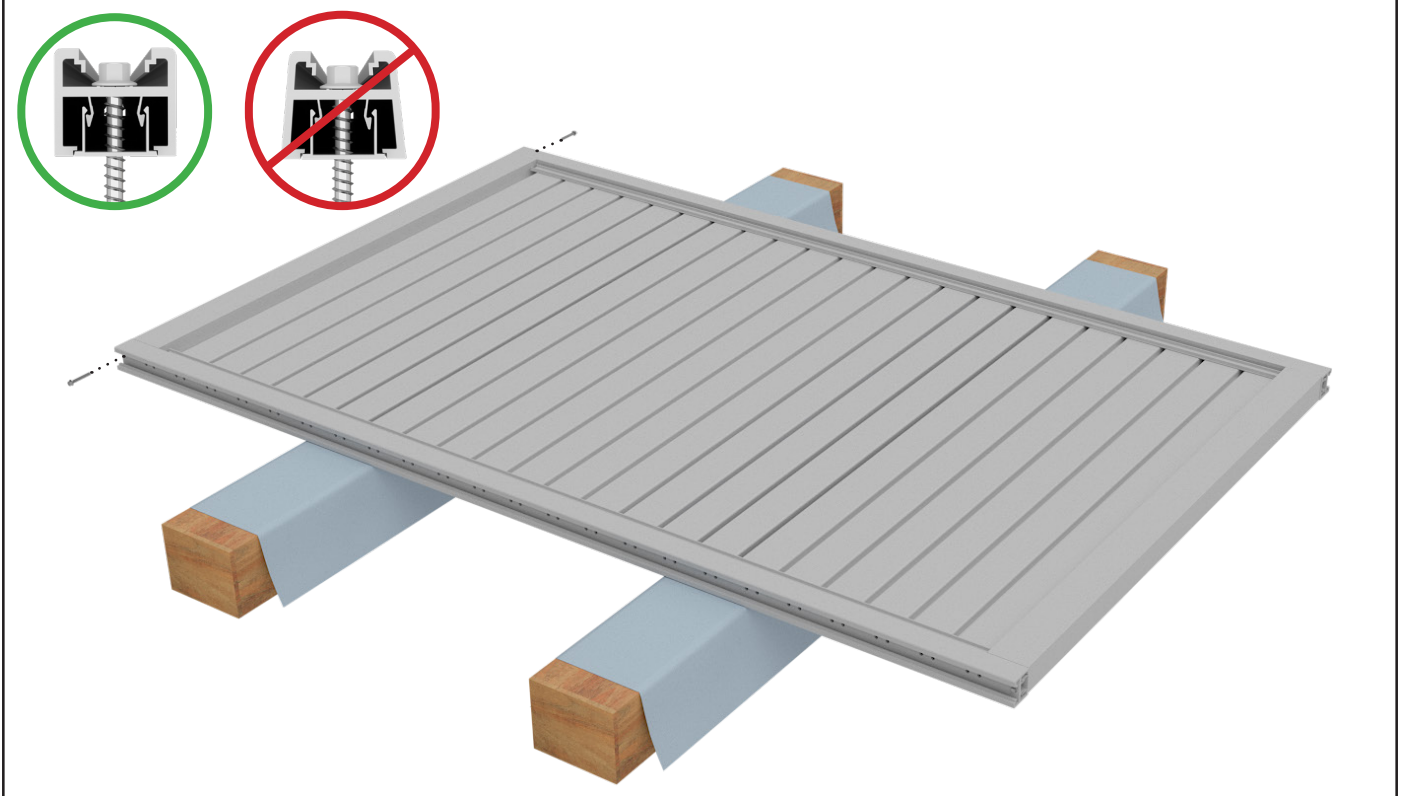
NOTE: DO NOT OVER TIGHTEN SCREWS!



- 5 Using screws from screw kit, attach the Quickscreen side frames centrally to the gate side frames.

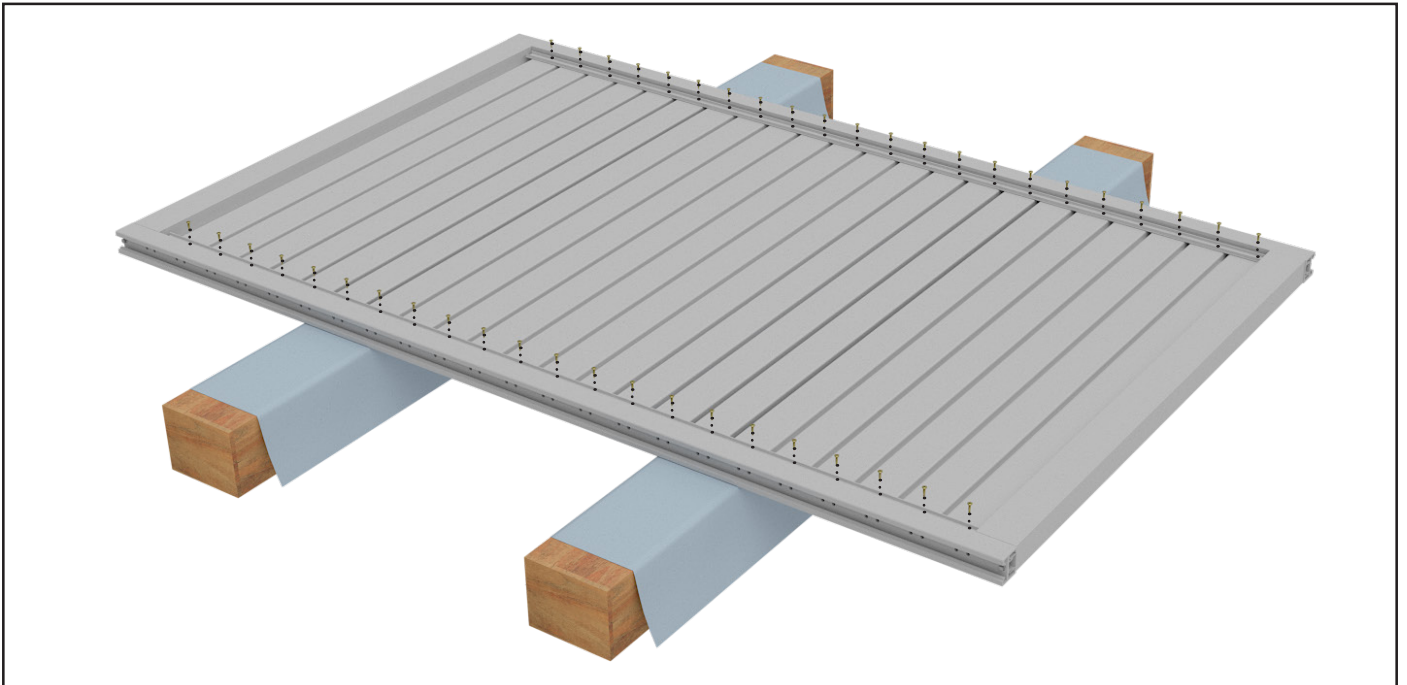


- 6 Slide all slats into side frames.
NOTE: DO NOT AFFIX SLATS WITH SCREWS AT THIS STAGE

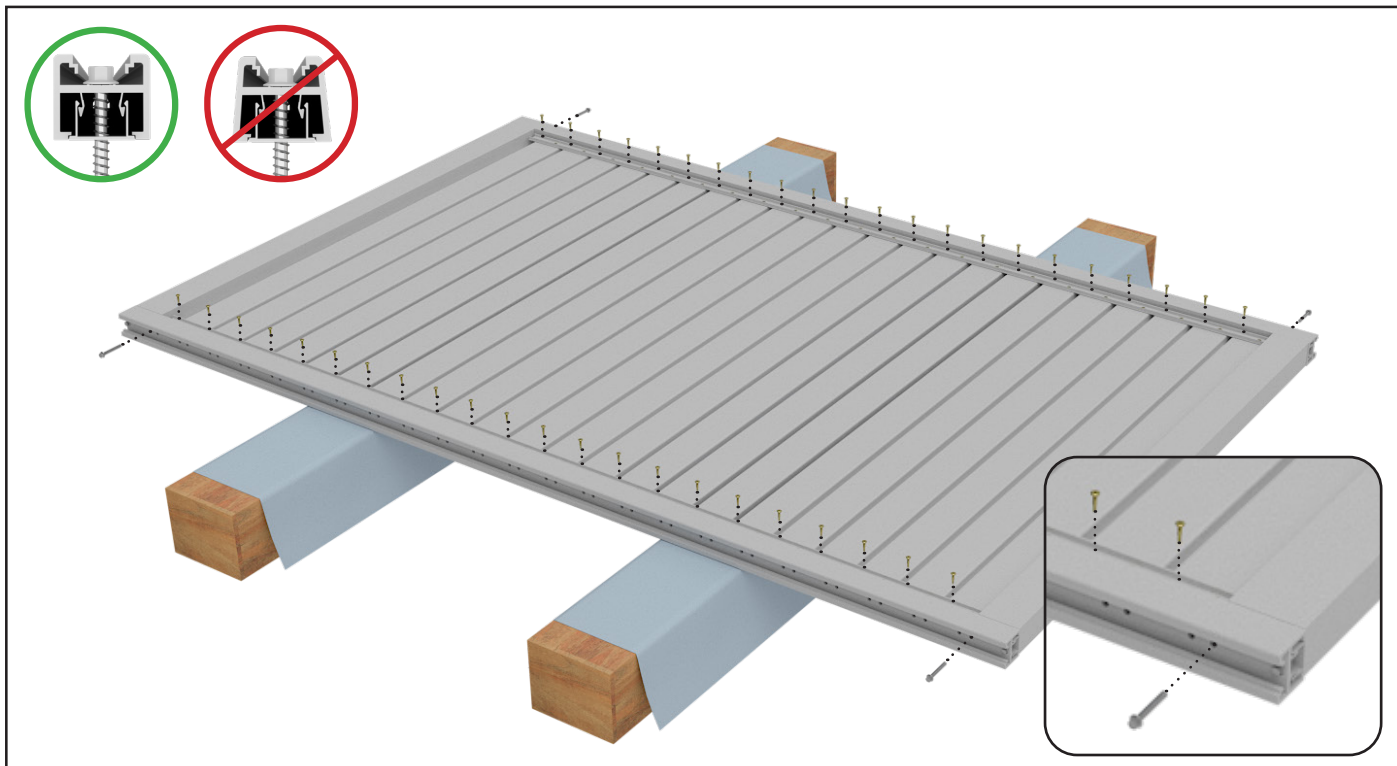


- 7 Attach the second heavy duty rail to the gate side frames with 1 x hex screw on each side. Measure diagonally to ensure the gate is square.

NOTE: DO NOT OVER TIGHTEN HEX SCREWS.

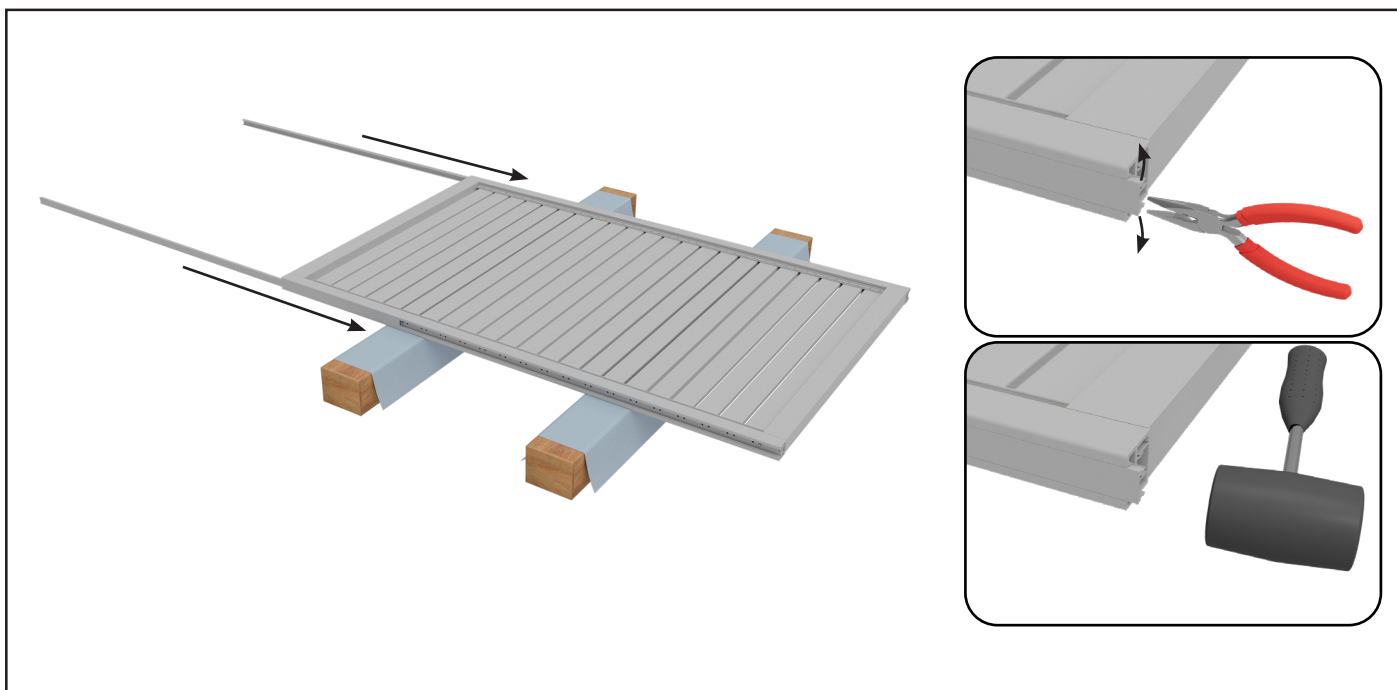


- 8 Space all slats as required, then screw fix each end of the slats with one screw on each side.

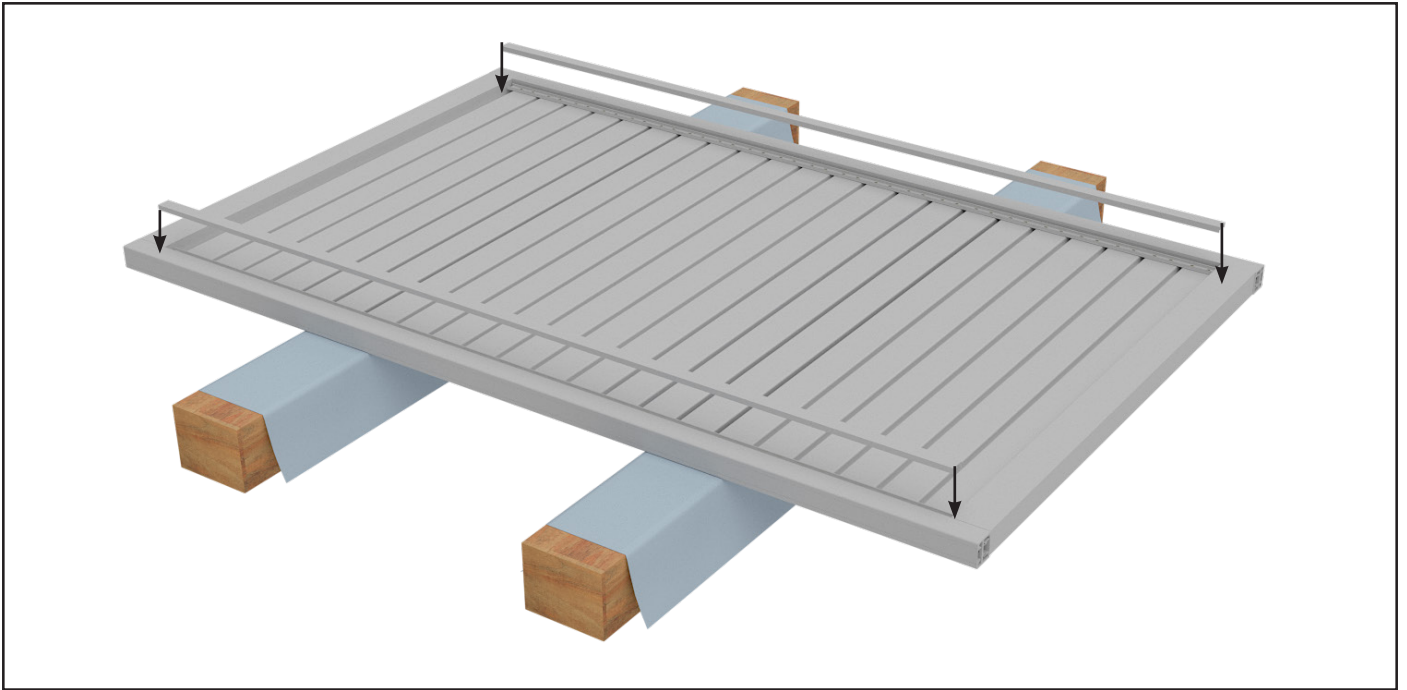


- 9 Re-measure diagonally to ensure gate is square, then add a second screw on both ends of all slats to secure. Complete by adding a second hex screw to each corner of the gate side frames.

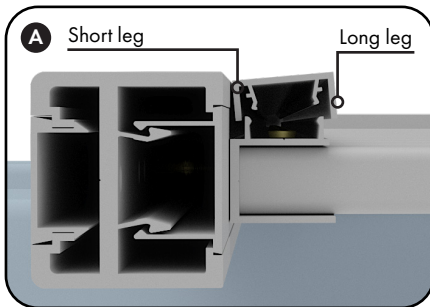
NOTE: DO NOT OVER TIGHTEN HEX SCREWS



- 10 Slide 2 x gate inserts past the end of the gate side frame (approx 10mm); then, using pliers, bend the inner legs of the gate insert slightly outwards. Tap the gate insert back to level with gate side frames. This will prevent the outer insert from sliding down when the gate is in operation.

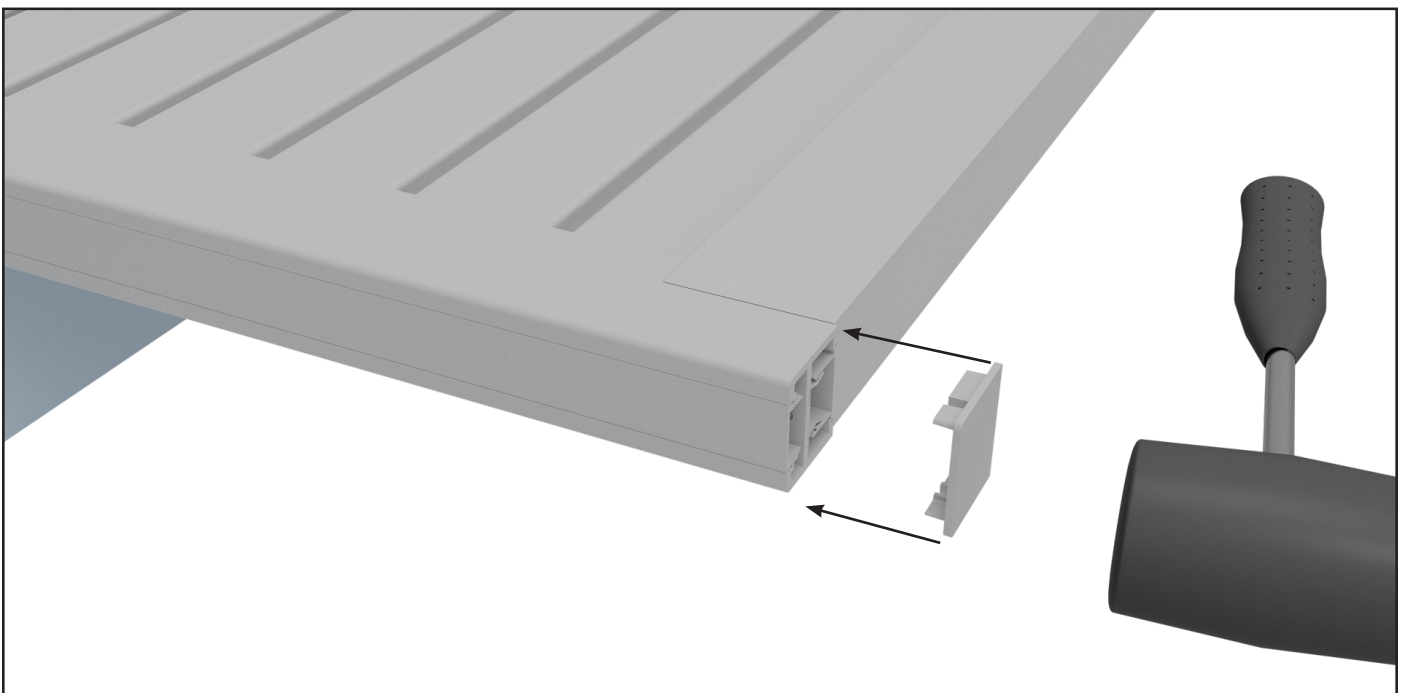
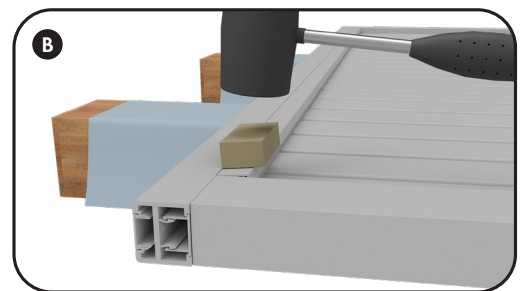


- 11 Attach the snap-on concealing covers to hide slat screws.



TIP: A) Engage shorter leg of snap-on cover first. At this point, the snap-on cover will be sitting off the frame on an angle, the longer leg must be at open side of frame.

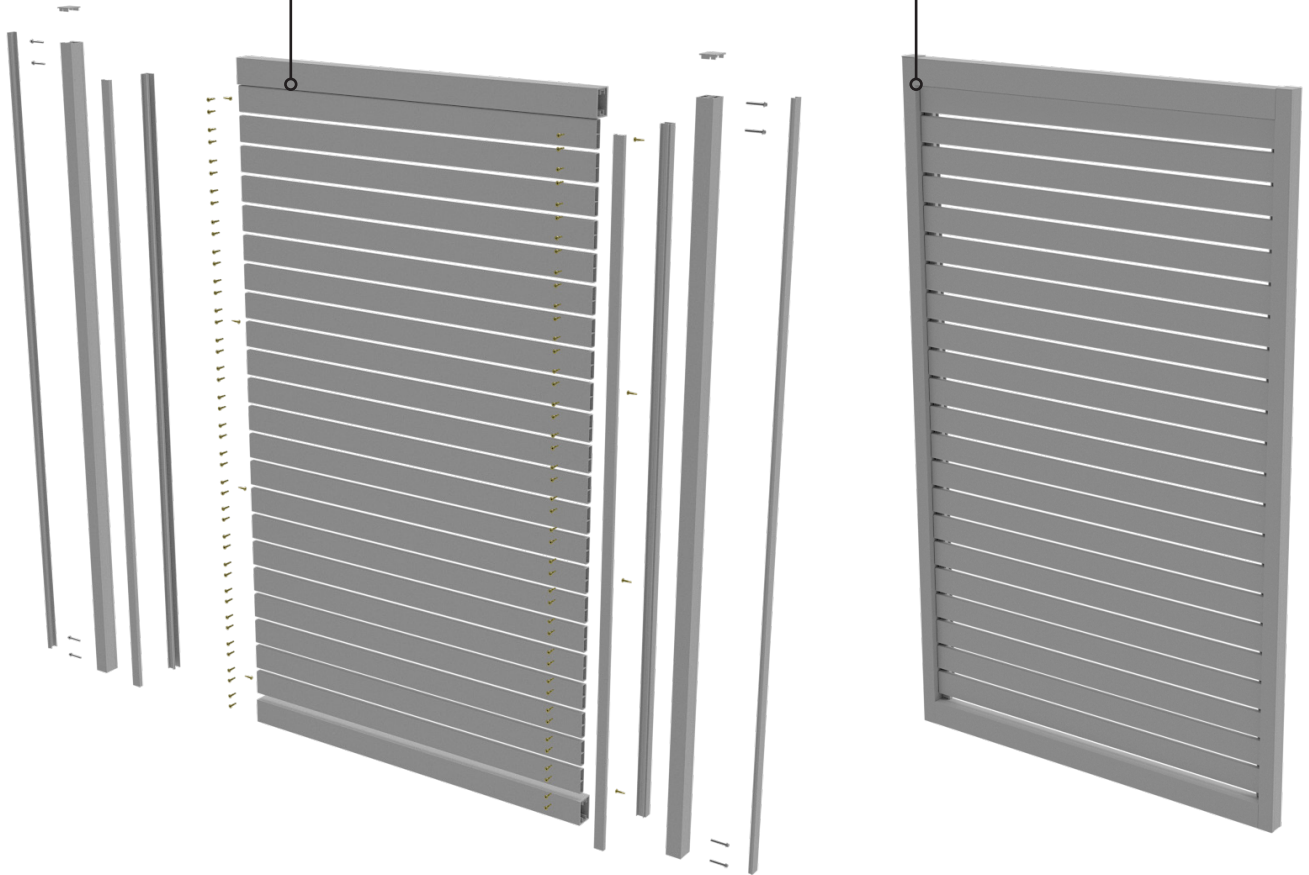
B) Starting from one side and working your way along, use a wood block and a hammer/mallet to tap the longer leg into place. A short, sharp tap may be required to engage the long leg.



- 13 Insert top caps.

EXPLODED VIEW

COMPLETE GATE



APPENDIX 1

HORIZONTAL SLAT PEDESTRIAN GATE

GATE HEIGHT PLACEMENT USING 90MM SLAT

FABRICATION

OVERVIEW

Please consider the height placement of the gate when using the 90mm slat option

PEDESTRIAN GATE
(1,300mm max width)

FIXED PANEL

