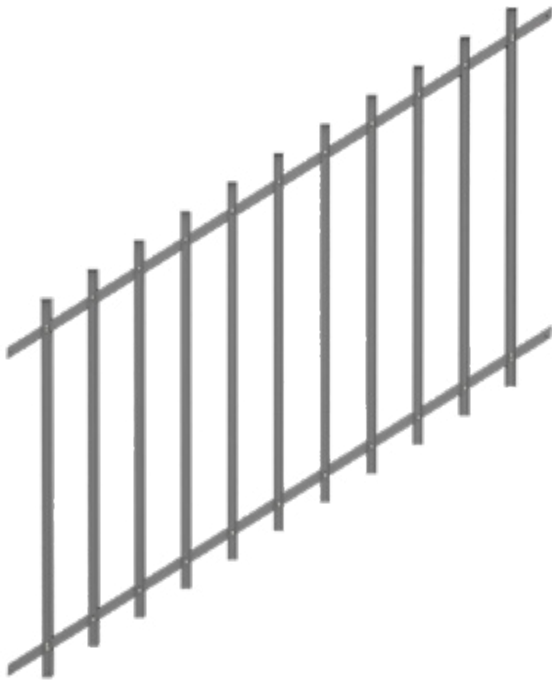




# BARR™ RAKED PANEL

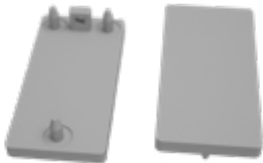
## INSTALLATION OVERVIEW



Raking Panel



Raking Brackets



Top and Bottom  
Caps



Raking Panel Picket  
Snap-on Cover

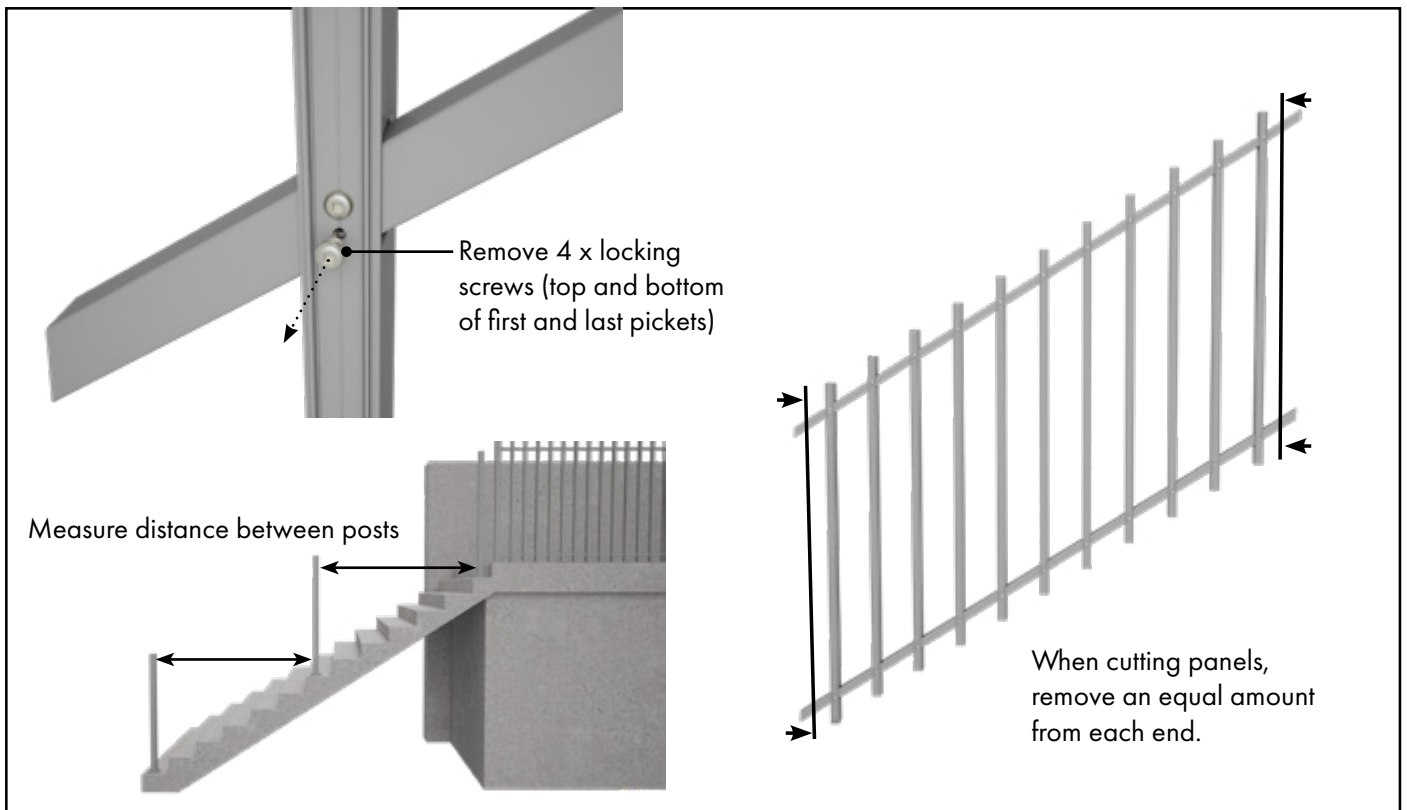


Locking Screws

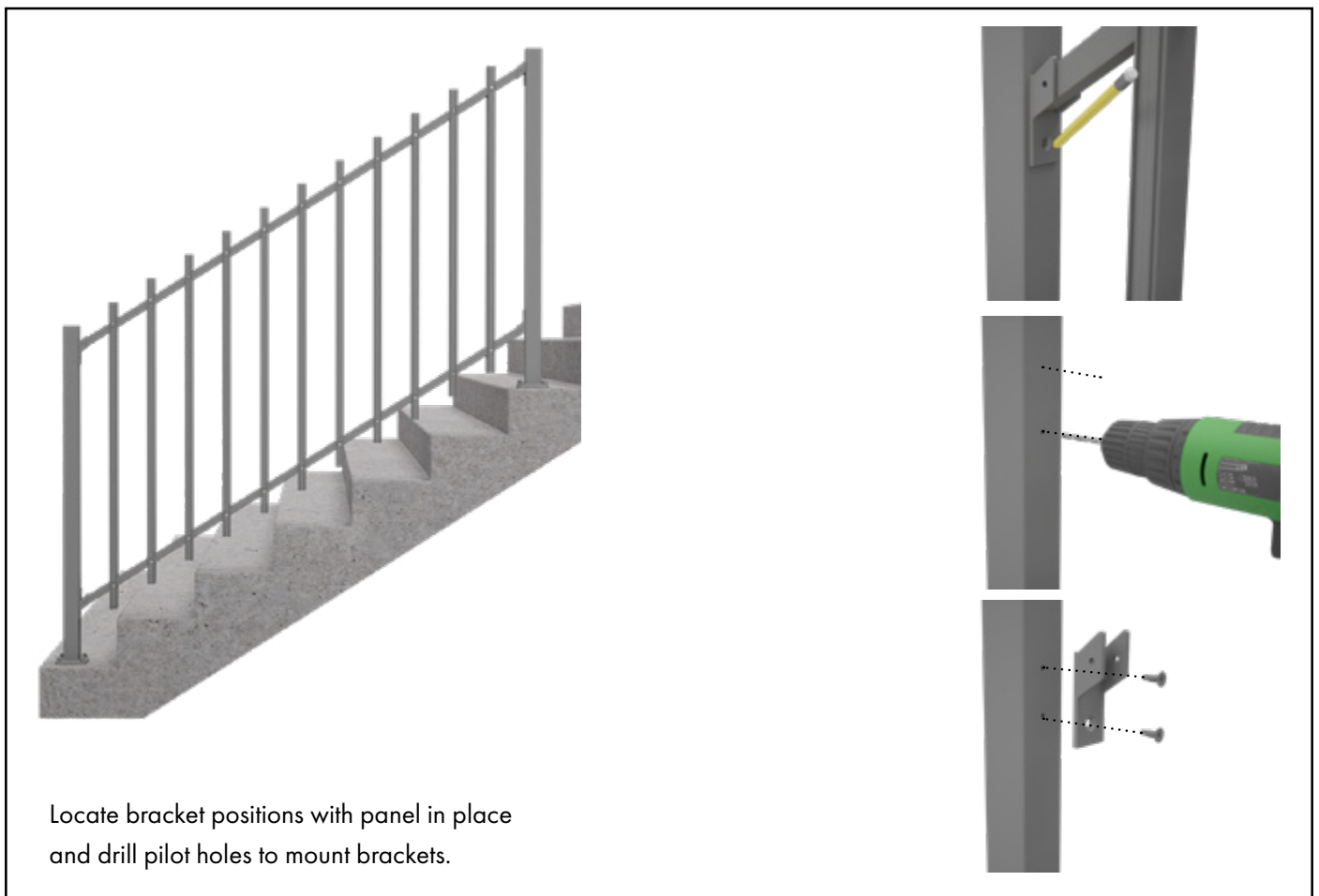


OPTIONAL  
Handrail Swivel  
Bracket  
(suits a 50mm post)

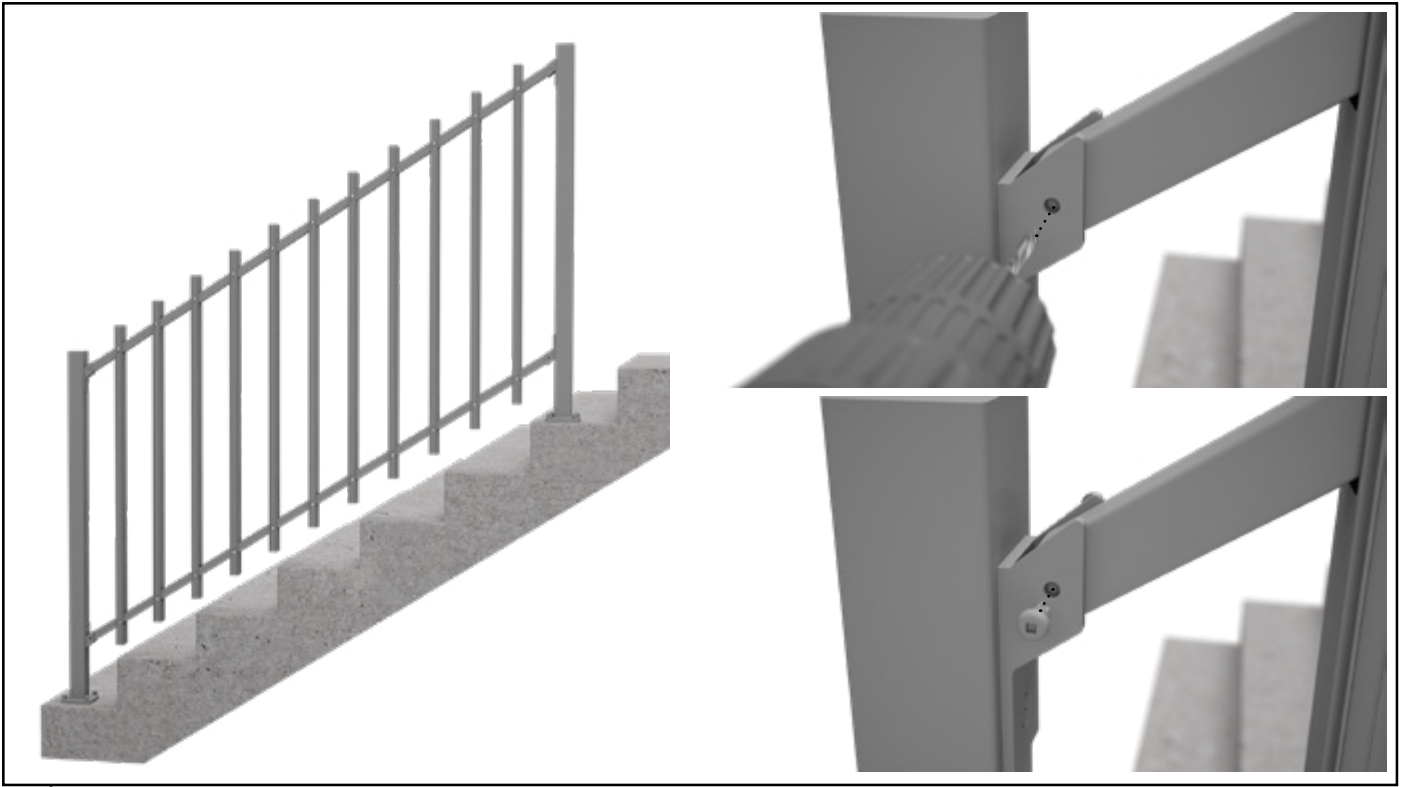
**IMPORTANT:** Ensure relevant engineering is obtained prior to installation



- 1 Remove 4 x locking screws from first picket in from each end to allow for raking movement of the panel. Measure distance between posts. With reference to final raked angle, cut panel to length allowing for the raking brackets at each end. Remove an equal amount from both sides.



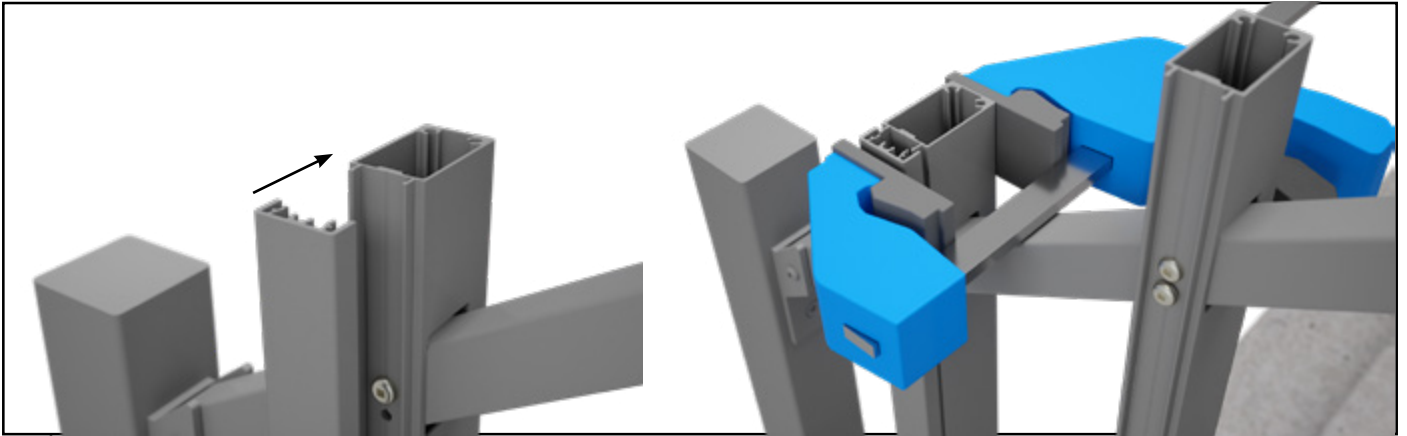
- 2 Hold panel between posts and locate brackets. Mark hole positions for brackets and drill pilot holes to the post - 2 per bracket. For aluminium post installation, attach brackets to the posts using the countersunk post fixing screws.



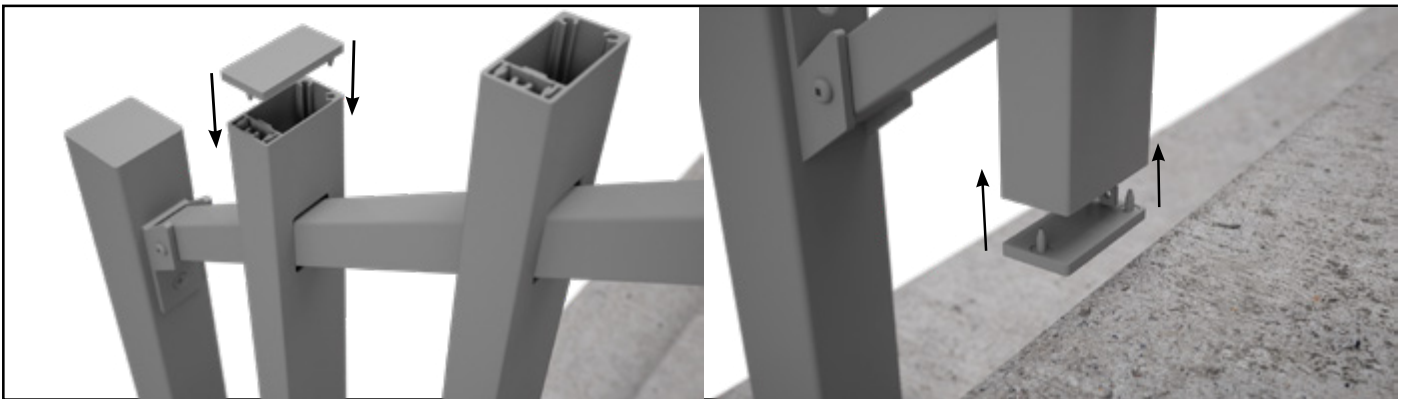
- 3 Position raking panel into brackets. Drill pilot holes through the raked rails and affix using Pan head screws or TEK screws.



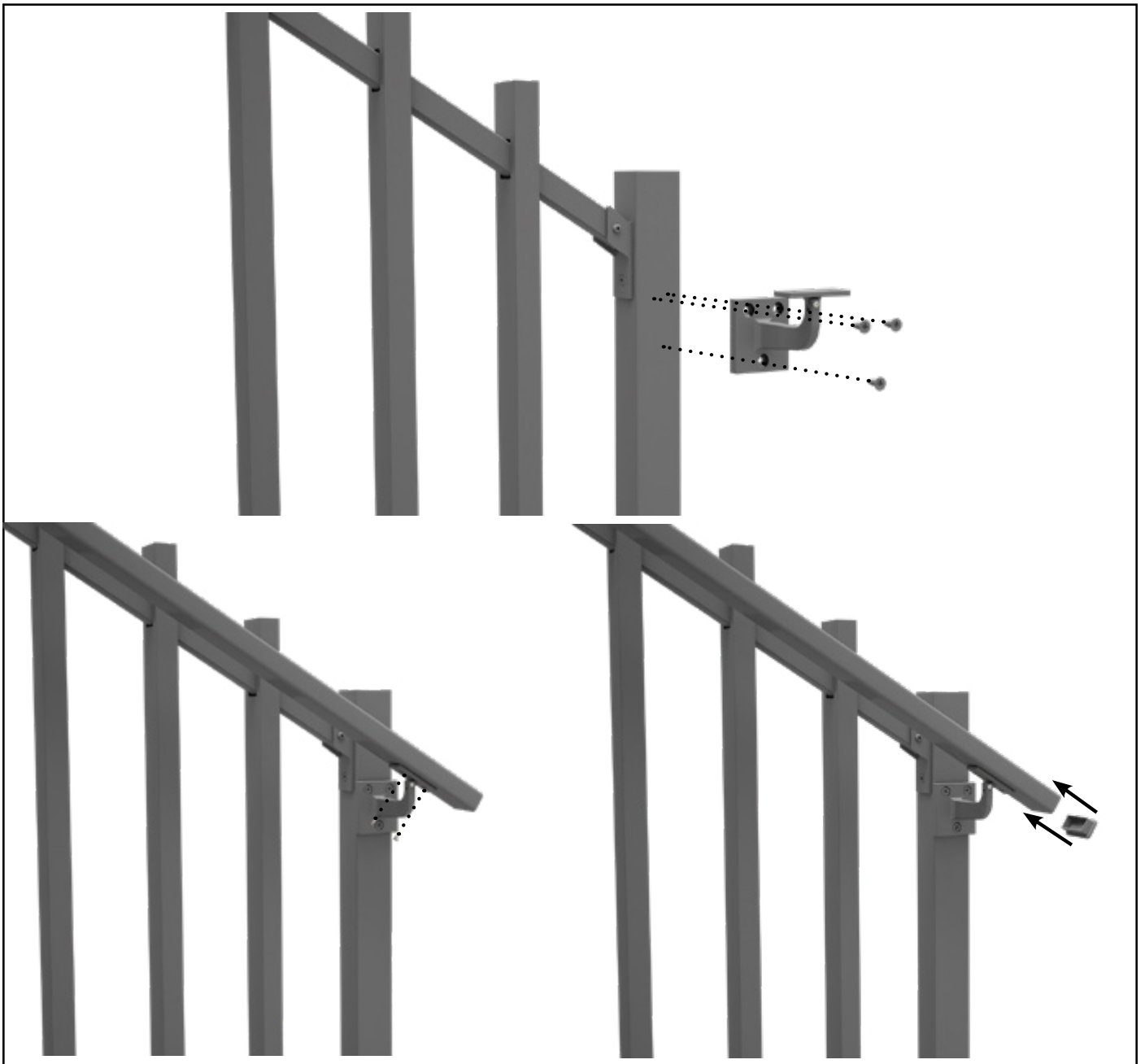
- 4 To lock panel in position, drill pilot holes and affix 4 x self tapping 'locking screws' to the second picket from each end - 1 screw at the top and one at the bottom of the two pickets.



5 Using a padded clamp and working your way down the picket, snap on picket cover to conceal fixtures.



6 Add top and bottom caps to pickets



**7** OPTIONAL EXTRA:

Attach handrail bracket to 50mm posts at desired height for handrail. Secure handrail to swivel-saddle using 2 screws on underside. Add caps to handrail to finish.